

Tooling Delphin modular clamping system



Design and
quality by
System 3R

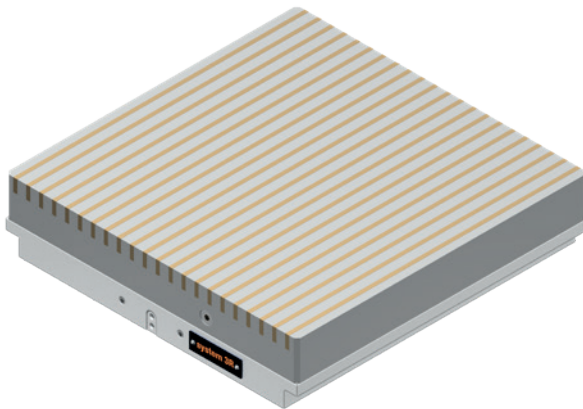
Contents

4	One Machine Base
6	Different Delphin applications
9	Why Delphin?
10	Product overview
11	DelphinCompact chuck
15	DelphinCompact baseplate (2-fold, 4-fold and 6-fold)
18	DelphinHCP chuck
19	DelphinClassic chuck
23	DelphinClassic baseplate
25	Delphin drawbars
27	Delphin pallets
28	DelphinCompact index
29	Delphin accessories
33	DelphinShort and frames for wire EDM
35	DelphinBIG chuck
42	Index

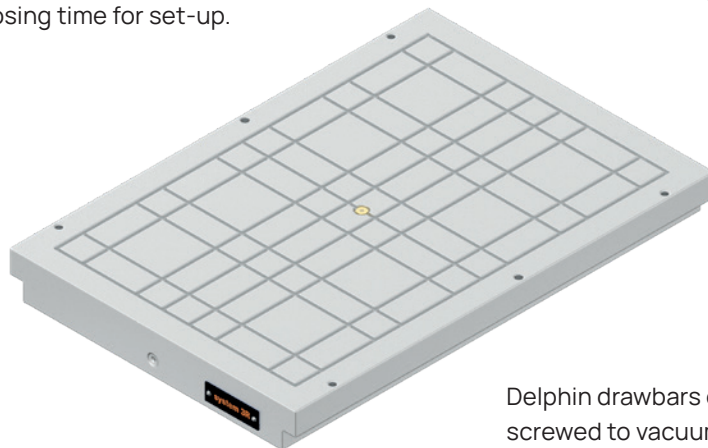
One Machine Base – Lots of workpieces held in



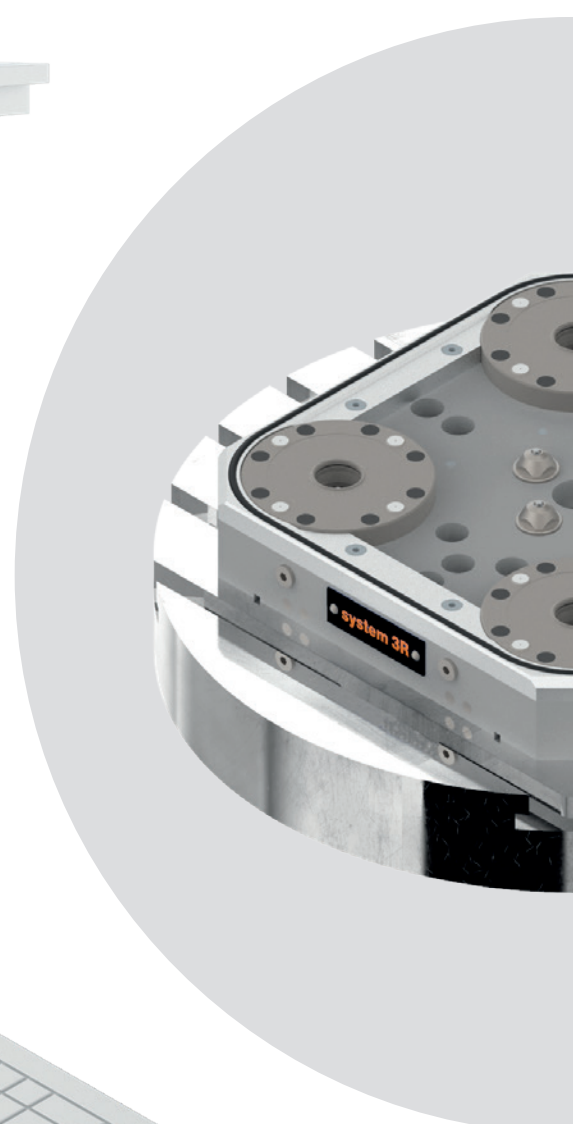
Pre-assemble all types and sizes of vices on the pallet



Milling magnets are particularly suitable for five-sided machining. The magnet pallet can be changed immediately without losing time for set-up.

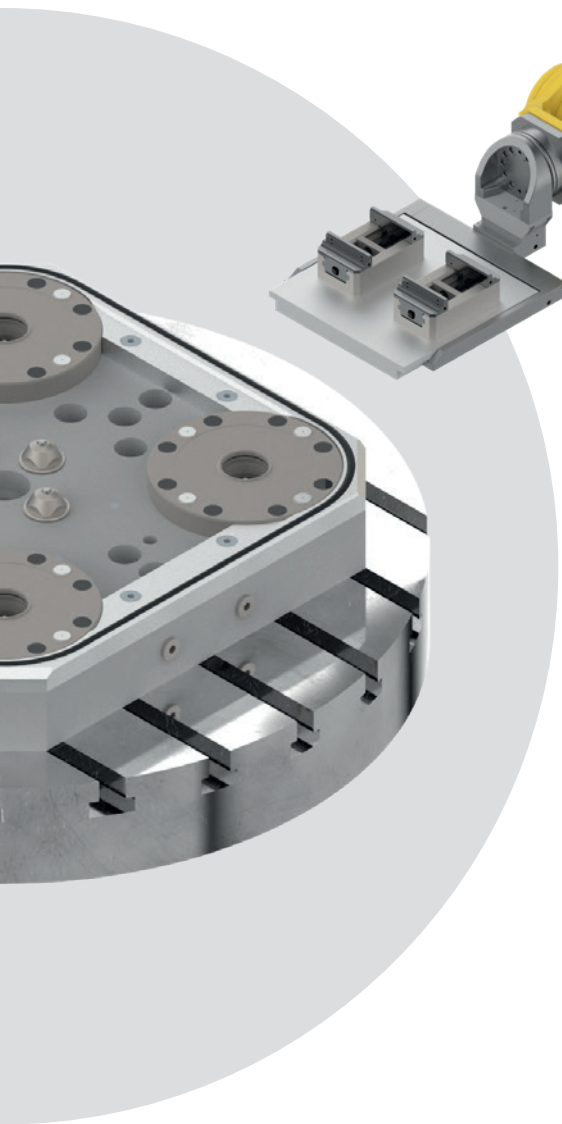


Delphin drawbars can easily be screwed to vacuum plates.

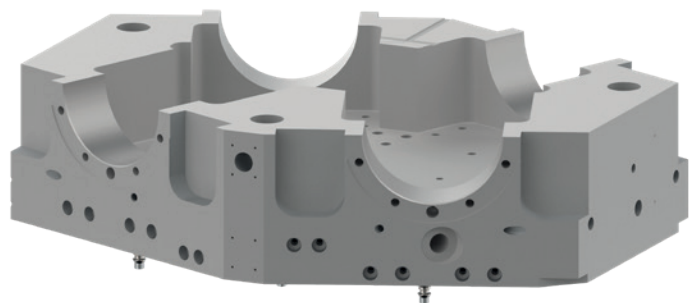




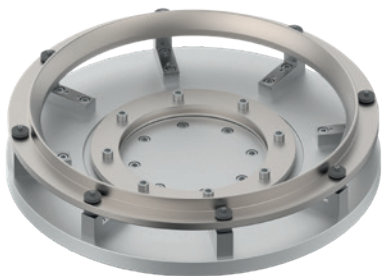
The T-slots are particularly suitable for clamping: workpieces of any kind; vices; rotary tables; stops; dividing attachments; and, prisms.



System 3R supplies stationary and rail-travelling industrial robots and handling devices that load the Delphin system easily.

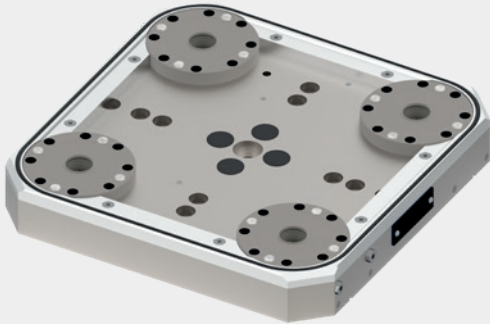


Drawbars serve as an interface between machine table and workpiece. Especially in mould making, direct part clamping is very popular. It ensures accurate positioning of moulds and workpieces on the machines in question.



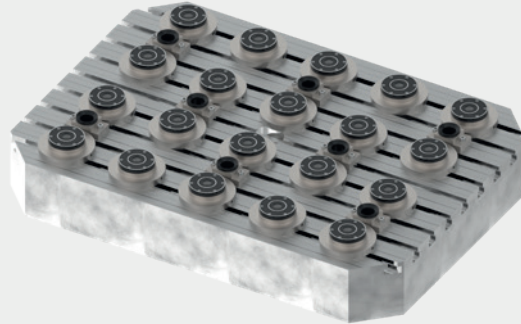
Customer-specific fixtures can be easily switched between different machines (e.g. milling, CMM and grinding) without losing accuracy or time in setting up.

Different Delphin applications



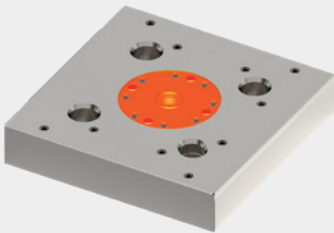
4-FOLD BASEPLATES

4-fold baseplates with a sealing frame are becoming popular for automated handling of pallets and parts.



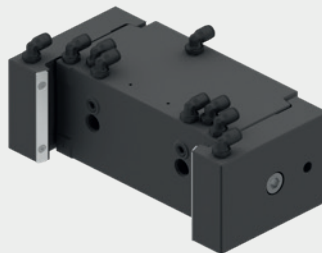
BUILT-UP

Free positioning with built-up chucks.



HIGH-TEMPERATURE AND ADDITIVE MANUFACTURING

Delphin high-temperature chucks work particularly well in additive manufacturing.



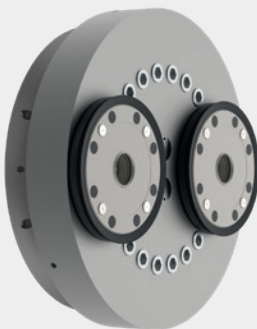
PALGRIP

Universal lateral gripper for light and heavy weights.



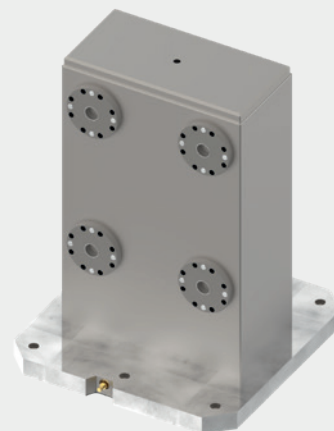
PALLET GRIPPER

The Delphin gripper is the coupling interface between robot and pallet.



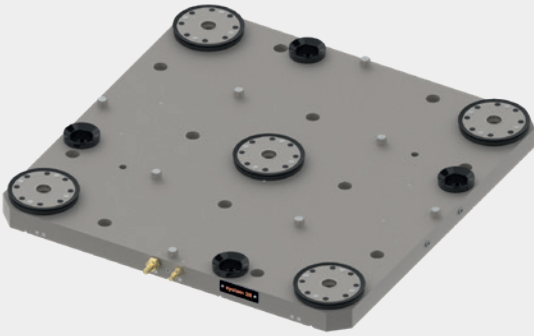
SPINDLE

Having two chucks on a spindle is very popular in the production of turbine blades. This clamping solution guarantees great stability when acceleration forces are high.



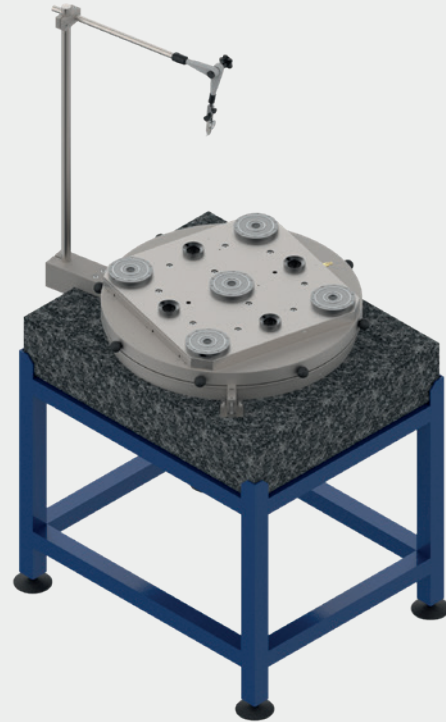
TOWER

Simple and easy vertical palletising of vices, pallets and fixtures. Fewer problems with chips (because they drop downwards).



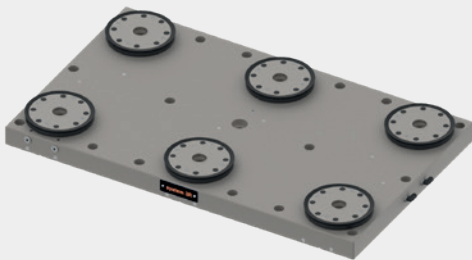
5-FOLD BASEPLATES

5-fold baseplates are popular with a Delphin index chuck in the middle. Thus, even small pallets can be used and it has more space in the magazine.



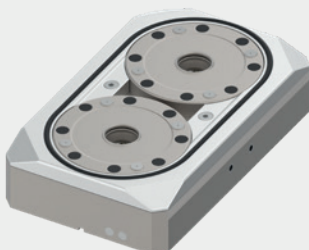
ROTATABLE PRESETTING STATION

While the machine is running, workpieces can be pre-positioned on the rotatable presetting station.



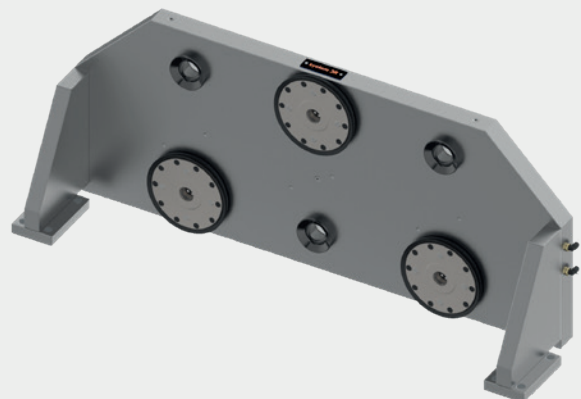
6-FOLD BASEPLATES

Baseplates with any number of Delphin chucks are possible.



2-FOLD BASEPLATES

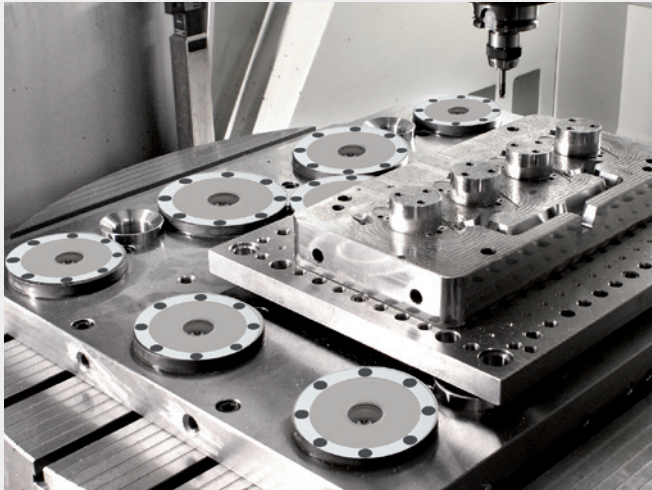
2-fold baseplates are especially suitable for single vices.



CUSTOMISED APPLICATIONS

Delphin offers you maximum flexibility and freedom to design your customised applications.

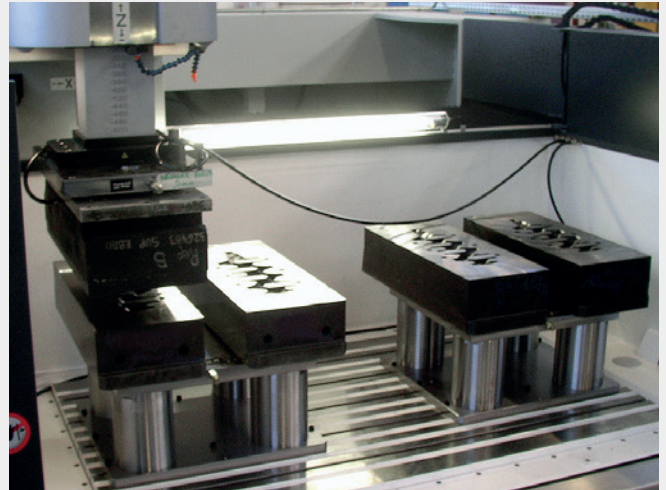
MILLING WITH DELPHIN



Example customer application

Thanks to high clamping force and mechanical locking, the Delphin clamping system is particularly suitable for milling, even under the extreme loads. Its modularity ensures extraordinarily accurate fitting for various devices and fixtures. This is essential in milling.

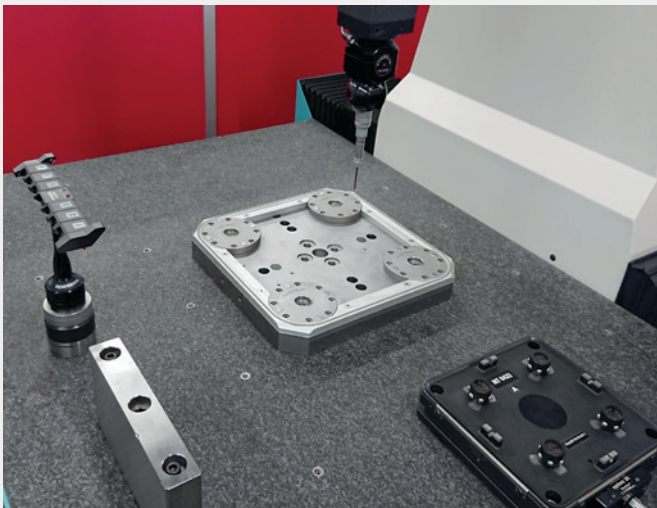
EDM WITH DELPHIN



Example customer application

Attaching electrodes or workpieces to a pallet has the great advantage of transferring the accuracy of upstream processes (e.g. CMM and milling) to the EDM process. The Delphin clamping system can even handle especially large electrodes and workpieces.

MEASURING WITH DELPHIN



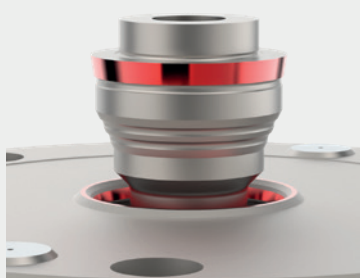
Without removing the fixture, a workpiece can be measured on a measuring machine (e.g. for an intermediate check). Thanks to the drawbars, returning the workpiece to the production machine for further processing is highly accurate.

AUTOMATION WITH DELPHIN

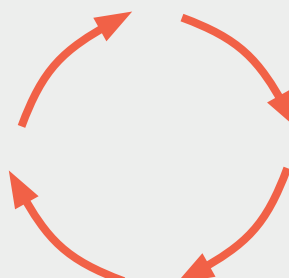


Depending on the Delphin system, activation is either pneumatic or hydraulic. The control signals can be sent from the machine or the robot to the corresponding machine valves. These then activate the Delphin system. Modern robots and software work perfectly with the Delphin clamping system. This enables your machine to work day and night.

Why Delphin?

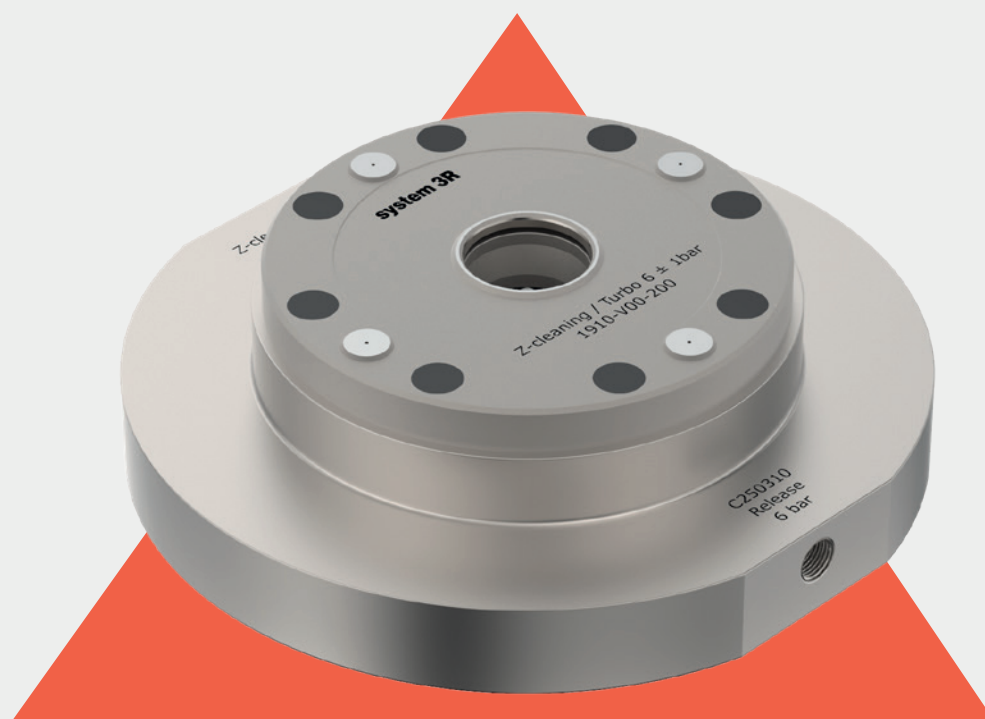


Highest repeatability.



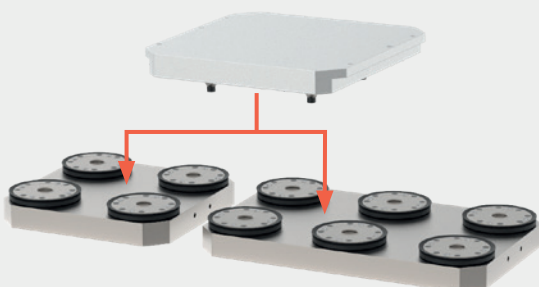
Highest process reliability.

QUALITY



FLEXIBILITY

PRODUCTIVITY



The Delphin clamping system is modular and adapts to your machine.
Standardised interface for all machines.



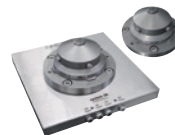
Fastest possible changing of pallets, devices and workpieces. Reduced set-up times.
Unmanned operation with Delphin automation.

Product overview



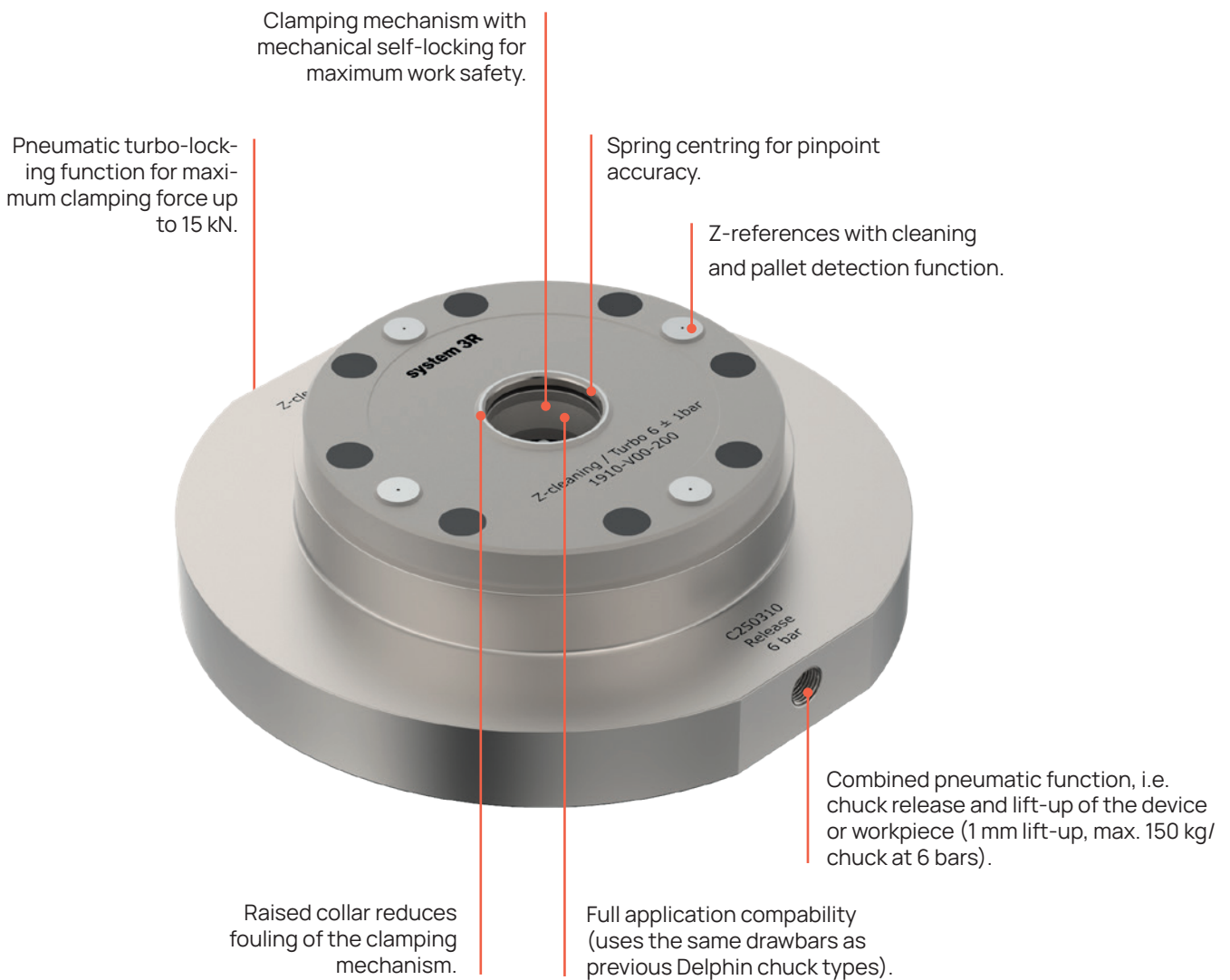
Description	DelphinClassic	DelphinCompact	DelphinCompact index
	Manual	Manual and automatic	Manual and automatic
Recommended applications	milling, wire/die-sinking EDM and laser	milling, wire/die-sinking EDM, laser and automation	milling, wire/die-sinking EDM, laser and automation
Recommended workpiece weight / chuck	up to 500 kg	up to 500 kg	up to 500 kg up to 80 kg, manual handling* up to 50 kg in automation*
Clamping force	10 kN	15 kN, with turbo locking	15 kN, with turbo locking
Holding force	60 kN	60 kN	60 kN
Safety	mechanical self-locking	mechanical self-locking	mechanical self-locking
Presence control and cleaning	no	yes	yes
Releasing	pneumatic, 6 - 10 bars hydraulic, up to 30 bars	pneumatic, 4 - 10 bars hydraulic, up to 30 bars	pneumatic, 4 - 10 bars hydraulic, up to 30 bars
Soft landing and lift-up function	no	up to 1 mm	up to 1 mm
Lift-up weight / chuck		up to 150 kg at 6 bars up to 1,000 kg at 30 bars	up to 150 kg at 6 bar up to 1000 kg at 30 bars
Centre-to-centre distance (cc)	120 - 400 mm	120 - 400 mm	120 - 400 mm
Diameter	Ø 115 mm	Ø 115 mm	Ø 115 mm
Centre repeatability	0.003 mm	0.003 mm	0.003 mm
Angle repeatability	-	-	0.02 mm
System centring accuracy	0.005 mm	0.005 mm	0.005 mm 0.02 mm angle / 100 mm*
Material	hardened stainless steel	hardened stainless steel	hardened stainless steel

*Valid for index single chuck C254810 pallet.



Description	DelphinHCP	DelphinBIG
	Manual and automatic	Large part manufacturing
Recommended applications	milling, die-sinking EDM, laser and automation	milling, laser and automation
Recommended workpiece weight / chuck	up to 500 kg	up to 2 000 kg
Clamping force	15 kN	50 kN, with turbo locking
Holding force	60 kN	100 kN
Safety	mechanical self-locking	mechanical self-locking
Presence control and cleaning	yes	yes
Releasing	hydraulic, 30 - 70 bars	hydraulic, 40 - 60 bars
Soft landing and lift-up function	up to 1 mm	up to 2 mm
Lift-up weight / chuck	up to 1,000 kg at 55 bars	up to 2,500 kg at 60 bars
Centre-to-centre distance (cc)	100 - 400 mm	400 - 1,000 mm
Diameter	Ø 95 mm	Ø 150 mm
Centre repeatability	0.003 mm	0.005 mm
Angle repeatability	-	-
System centring accuracy	0.005 mm	0.010 mm
Material	chuck front, hardened stainless steel; other components, hardened steel	hardened steel

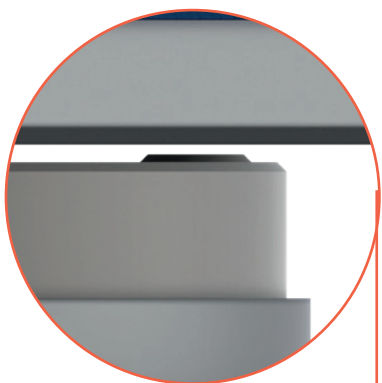
DelphinCompact chuck



KEY FACTS

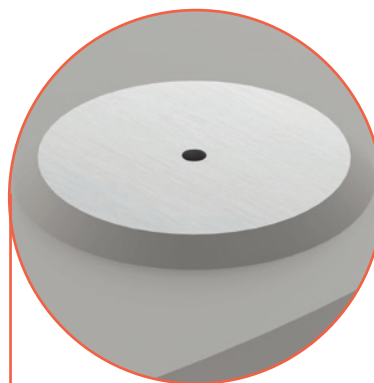
- Very compact design (outer diameter 115 mm)
- Stainless steel (used for milling, EDM, wire EDM, turning and grinding processes)
- High clamping force (up to 15 kN with turbo locking)
- Pneumatic opening (lift-up function, 150 kg at 6 bars).

DelphinCompact chuck



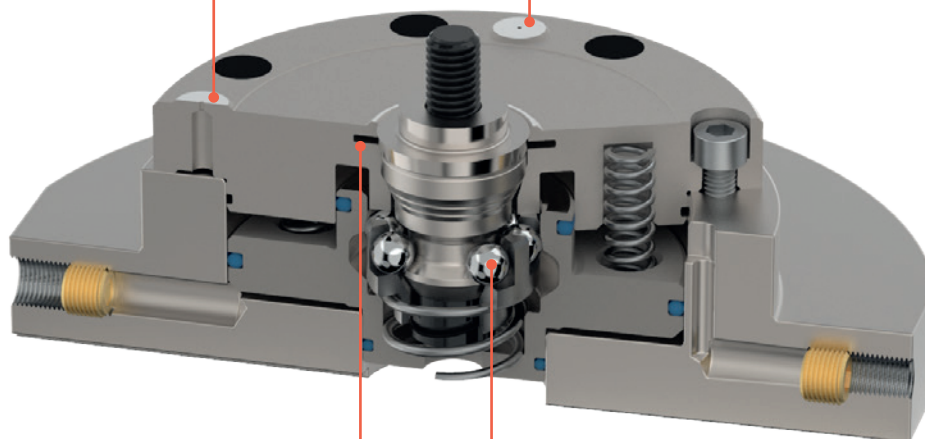
LIFT-UP

The lift-up function lets pallets land softly on the Z-supports and protects them from impacts. This function also significantly improves pallet presence control.



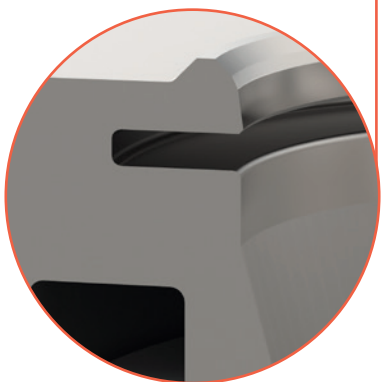
Z-SUPPORT CLEANING

Perfectly balanced Z-support surface for the best possible cleanliness, dirt removal and detection.



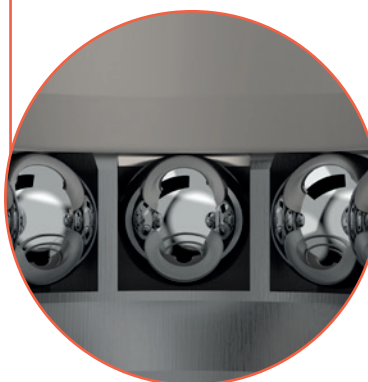
CENTRING

Conical spring centring for absolutely zero play between drawbar and chuck. This ensures the highest possible repeatability, excellent rigidity and less vibration.

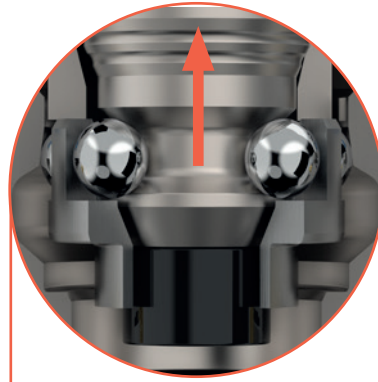


DIRT INSENSITIVE

A floating ball cage permits a larger angular deviation between pallet and chuck during loading and unloading. In Addition, the design is dirt insensitive.



DelphinCompact chuck

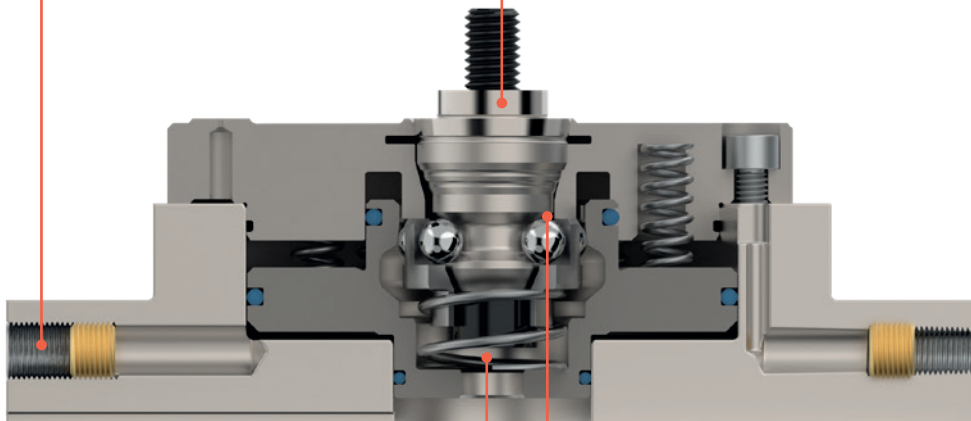


REQUIRED AIR PRESSURE

Many clamping systems need an at least 6-bar compressed air supply. The DelphinCompact chuck requires only 4 bars to open the chuck and release the drawbar. This saves money and increases process safety.

HOLDING FORCE

The holding force sets the maximum permissible pull-out force. In turn, this latter force determines safety until the pallet is pulled out of the chuck. Delphin chucks have a minimum holding force of 60 kN.

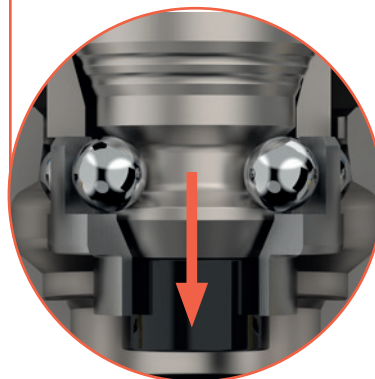
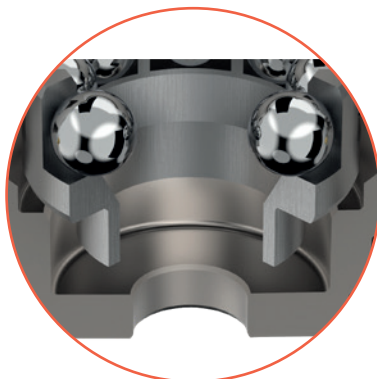


DRAIN HOLE

When unloading a pallet, dirt and water from the milling process can get into the clamping system. The Delphin system has a drain hole. Thus, dirt and water flush out and the chuck keeps the functionality.

CLAMPING FORCE / PULL-IN FORCE

The clamping or pull-in force sets how tightly a drawbar is pulled into the system. Together with other features such as centring, it determines system stability and rigidity.



DelphinCompact – for automated and manual applications

Technical data

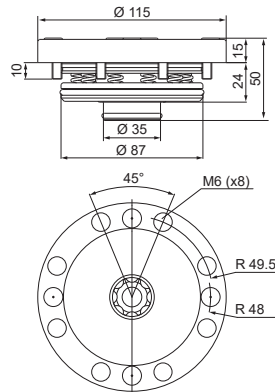
- Clamping force at 6 bars turbo pressure, up to 15 kN
- Holding force, 60 kN
- Air pressure open, 4 - 10 bars
- Oil pressure open, max 30 bars
- Lift-up function, pneumatic, 150 kg at 6 bars (lift-up 1 mm)
- function, hydraulic, 1,000 kg at 30 bars (lift-up 1 mm)
- Repeatability, within 0.003 mm
- Material, hardened stainless steel

Applications

Milling, wire/die-sinking EDM, laser and automation.

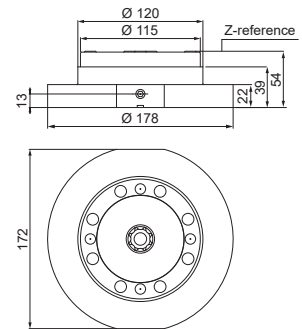
Built-in

Built into machine table or baseplate.



Built-up

Built on machine table.



DelphinCompact built-in chuck C250000

For easy installation in machine tables and baseplates.



DelphinCompact built-in chuck without lift-up C250010

For easy installation in machine tables and baseplates. Specially designed for tower or other applications with lateral loads.



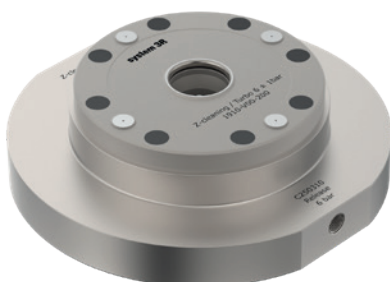
DelphinCompact built-in chuck index C250050

For easy installation in machine tables and baseplates. To be used with single pallet C254810.



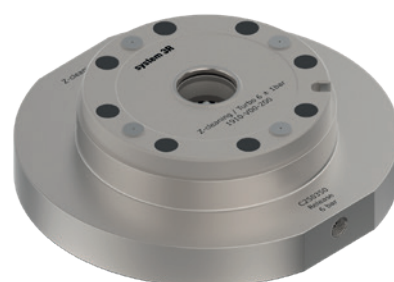
DelphinCompact built-up chuck C250310

For mounting directly on machine tables. Mounting holes to be drilled when installing.



DelphinCompact built-up chuck index C250350

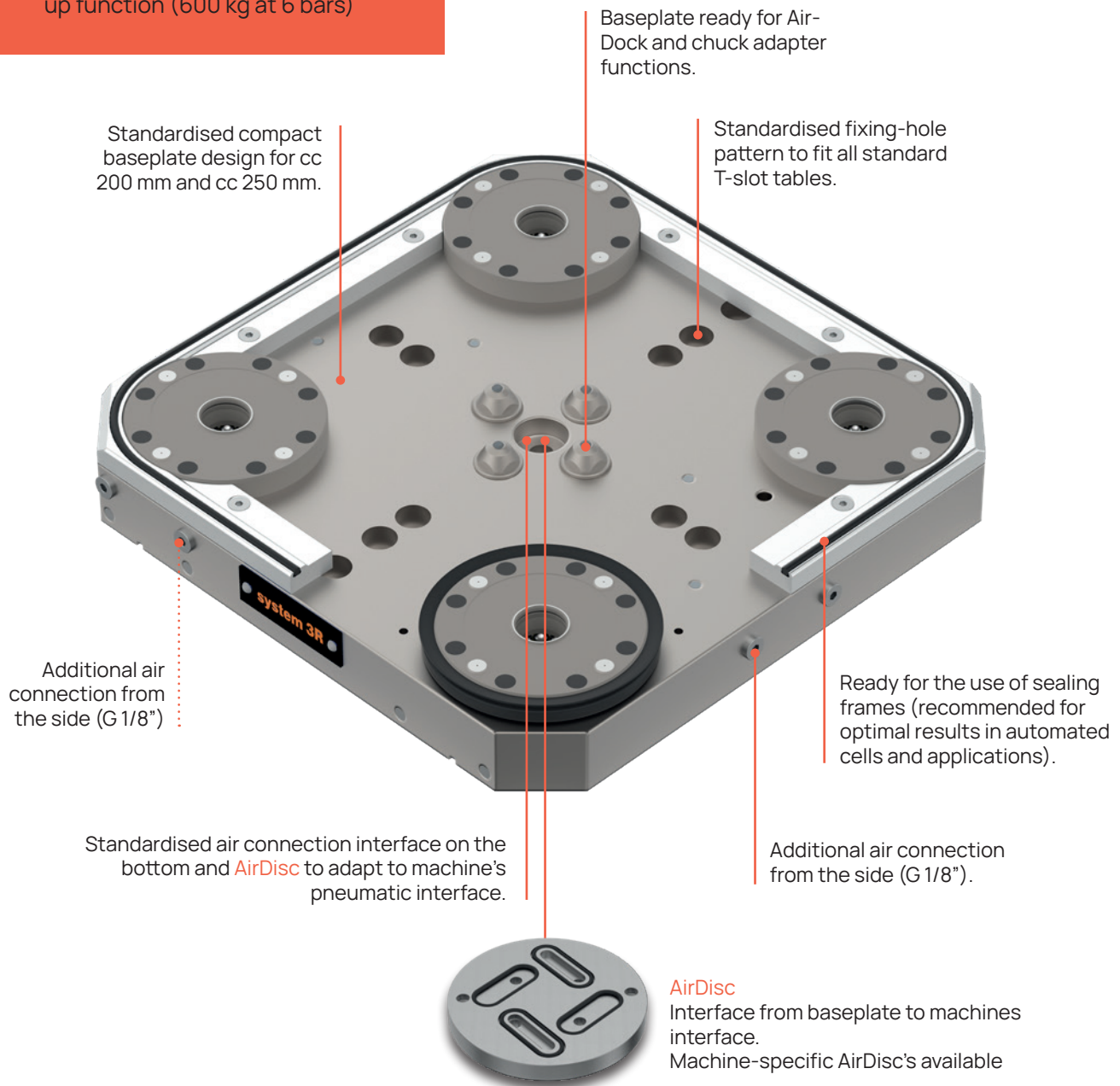
For mounting directly on machine tables. Mounting holes to be drilled when installing.



DelphinCompact baseplates (2-fold, 4-fold and 6-fold)

KEY FACTS

- Standardised design
- Ready for full use in automated solutions
- Easy adaptation to machine-specific air connections (via AirDisc)
- High clamping force (up to 60 kN with turbo locking)
- Pneumatic opening with 1 mm lift-up function (600 kg at 6 bars)

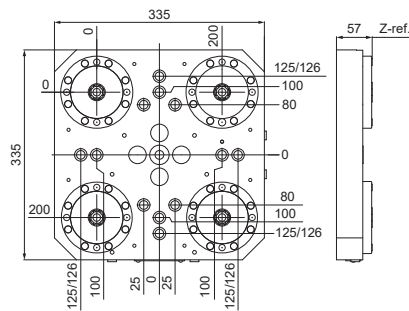


DelphinCompact baseplates – For automated and manual applications

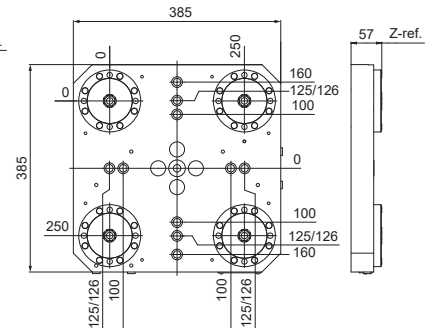
Technical data

- Clamping force at 6 bars turbo pressure, up to 60 kN
- Holding force, 240 kN
- Release pressure, 4 – 30 bars hydraulic or pneumatic
- function, pneumatic, 600 kg at 6 bars (lift-up 1 mm)
- Lift-up function, hydraulic, 4,000 kg at 30 bars (lift-up 1 mm)
- Repeatability, within 0.003 mm
- Chuck material, hardened stainless steel
- Baseplate material, tempered steel

DelphinCompact 4-fold baseplates cc 200 mm



cc 250 mm



Applications

Milling, laser and automation.

DelphinCompact 4-fold baseplates with 4 sealing rings

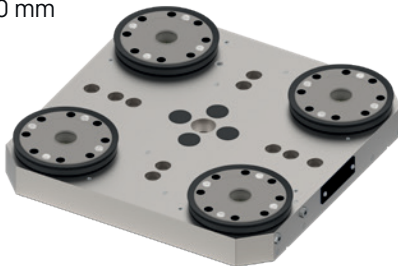
Supplied without AirDisc, but with 2 fittings for side connection.

S252201

- cc 200 mm

S252251

- cc 250 mm



DelphinCompact 4-fold baseplates with sealing frame

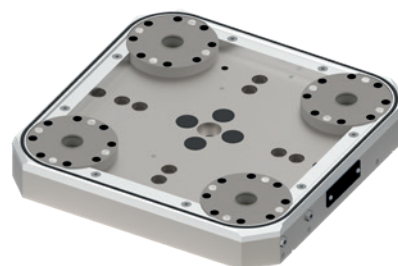
Supplied without AirDisc, but with 2 fittings for side connection.

S252202

- cc 200 mm

S252252

- cc 250 mm



Applications

Also suitable for die-sinking

DelphinCompact 4-fold baseplates with sealing frame with AirDock valves

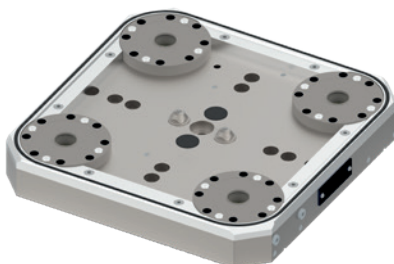
Supplied without AirDisc. Suitable for chuck adapter pallets.

S252203

- cc 200 mm

S252253

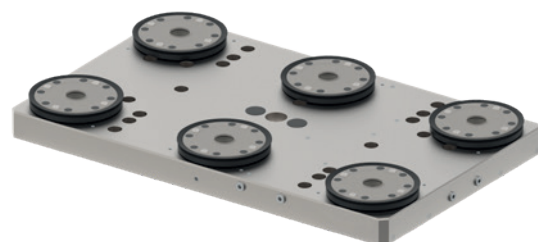
- cc 250 mm



DelphinCompact 6-fold baseplates with 6 sealing rings with AirDock valves

Supplied without AirDisc **S252351**

- cc 250 mm



Delphin – accessories

DelphinCompact 2-fold baseplates

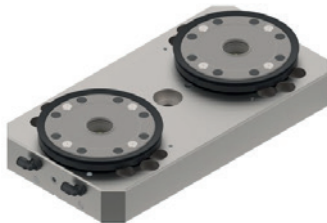
(delivered without AirDisc; 2 fittings for side connection)

S252101

- cc 200 mm

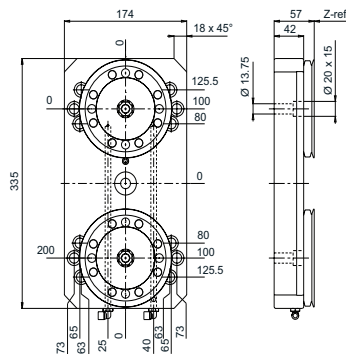
S252151

- cc 250 mm



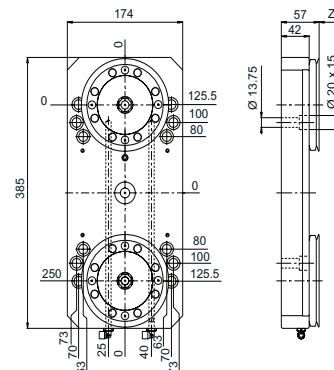
2-fold baseplate, cc 200 mm

Supplied without AirDisc.



2-fold baseplate, cc 250 mm

Supplied without AirDisc.



Delphin load and wash station

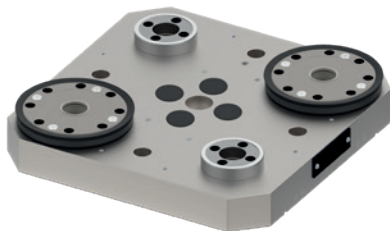
Supplied without AirDisc, but with 2 fittings for side connection.

S252204

- cc 200 mm

S252254

- cc 250 mm



AirDisc C253XXX

Can be designed for any machine-specific interface on request.



Chuck sealing ring C254090

Recommended only where DelphinCompact and DelphinClassic are used manually.



DelphinCompact sealing frames

C252210

For baseplate C252200.

- cc 200 mm

C252260

For baseplate C252250.

- cc 250 mm



DelphinHCP chuck

Clamping mechanism with mechanical self-locking for maximum work safety.

Spring centring for pin-point accuracy.

Z-references with cleaning and pallet detection function.



Hydraulic function – chuck releasing and lift-up (lift-up function up to 1,000 kg per chuck at 55 bars).

Full application compatibility (uses the same drawbars as previous Delphin chuck types).

KEY FACTS

- Very compact design (outer diameter 95 mm)
- Chuck front, hardened stainless steel; other components, hardened steel
- For use in milling, EDM, turning and grinding processes
- High clamping force (up to 15 kN)
- Hydraulic opening with lift-up function up to 1,000 kg per chuck at 55 bars

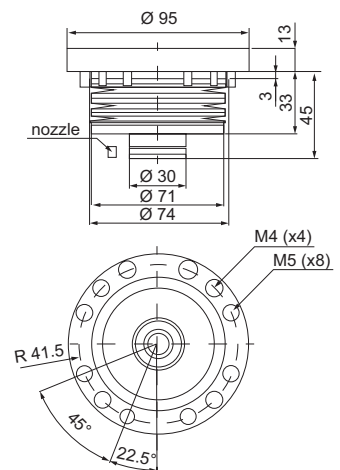
Technical data

- Clamping with cup springs and self-locking mechanism
- Clamping force 15,000 N
- Holding force, 60,000 N
- Pressure control and cleaning, 6 bars
- Lift-off during unclamping, 1 mm
- Releasing hydraulic pressure, 30 - 70 bars
- Accuracy, 3 µm
- chuck front, hardened stainless steel; other components, hardened steel

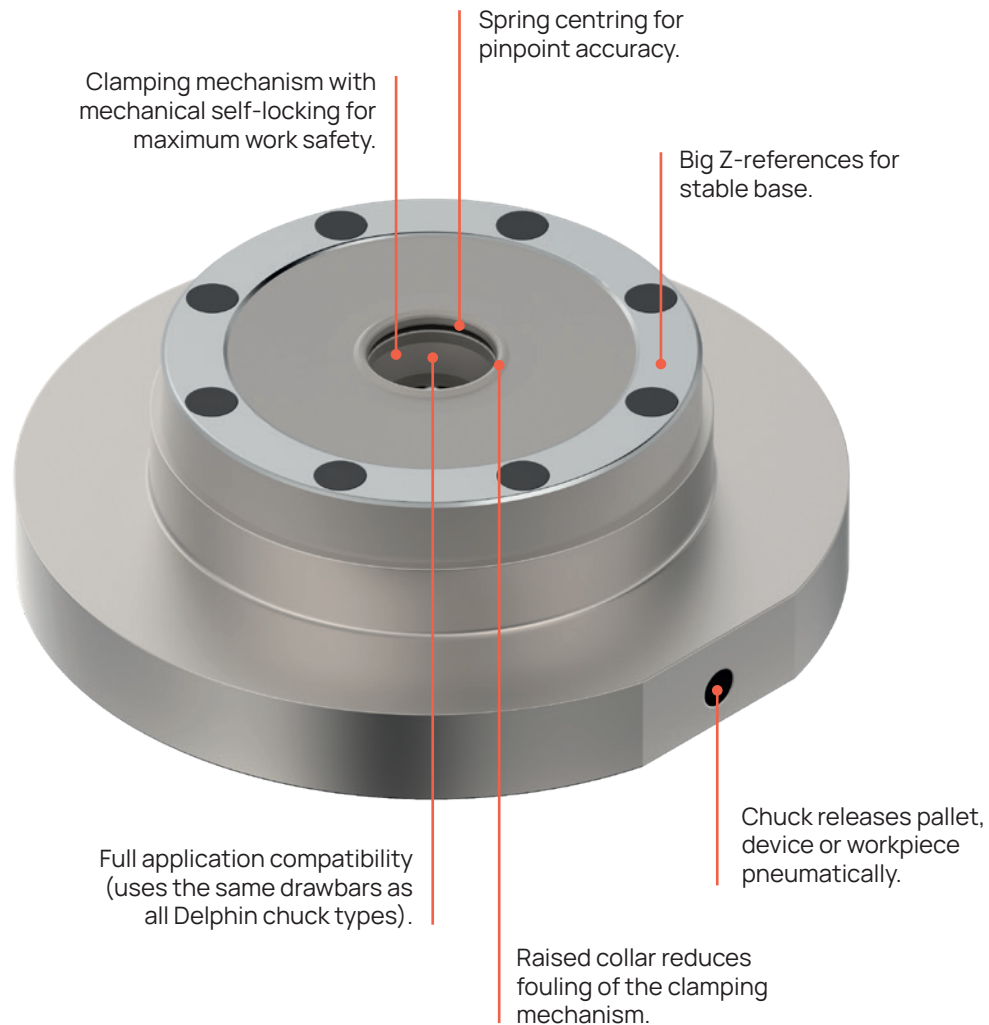
DelphinHCP hydraulic built-in chuck C220000

For easy installation in machine tables and baseplates.

- Outer diameter, 95 mm



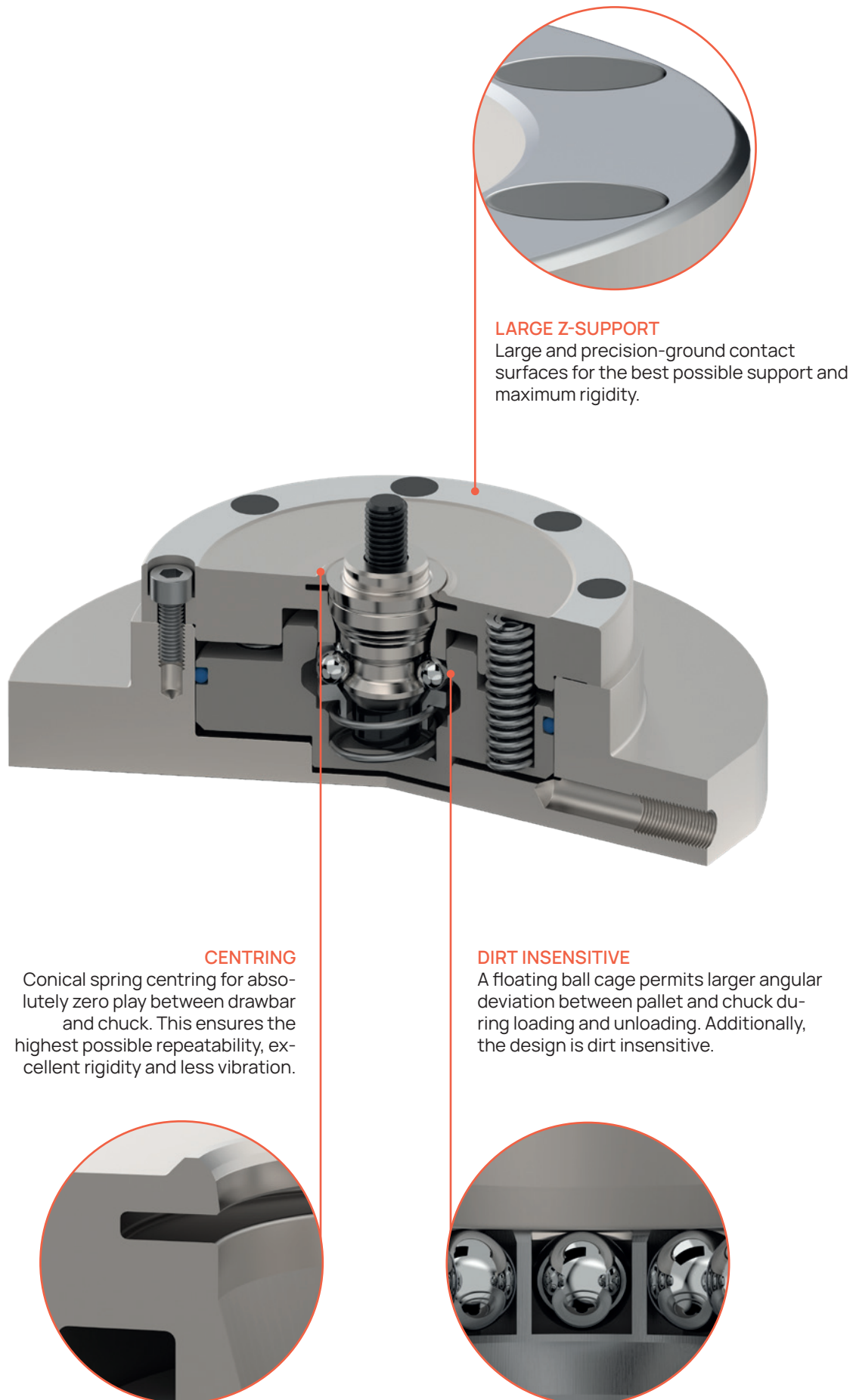
DelphinClassic chuck



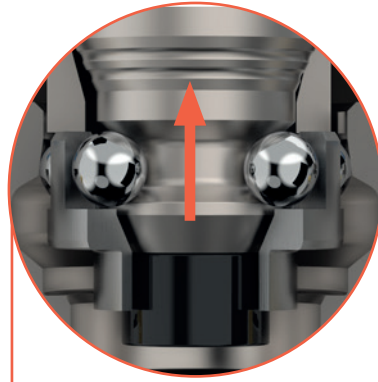
KEY FACTS

- Very compact design (outer diameter 115 mm)
- Stainless steel (used for milling, EDM, wire EDM, turning and grinding processes)
- High clamping force (up to 10 kN)

DelphinClassic chuck

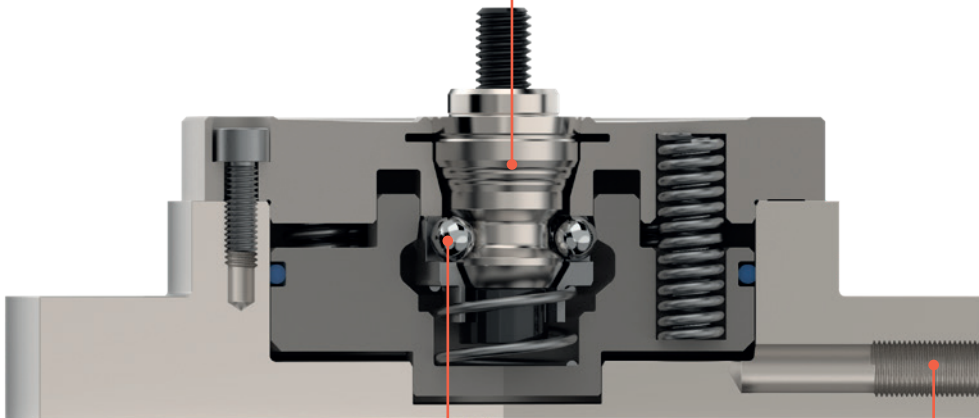


DelphinClassic chuck



HOLDING FORCE

The holding force sets the maximum permissible pull-out force. In turn, this latter force determines safety until the pallet is pulled out of the chuck. Delphin chucks have a minimum holding force of 60 kN.

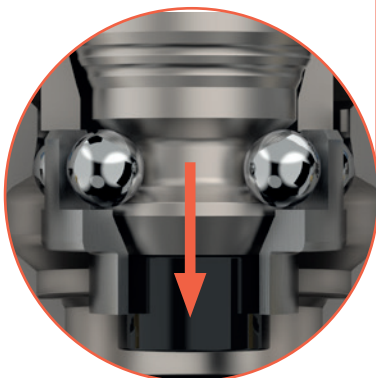


CLAMPING FORCE / PULL-IN FORCE

The clamping or pull-in force sets how tightly a drawbar is pulled into the system. Together with other features such as centring, it determines system stability and rigidity.

REQUIRED AIR PRESSURE

The DelphinClassic chuck requires 6-bar air pressure to open the chuck and release the drawbar.



DelphinClassic – For manual applications

Technical data

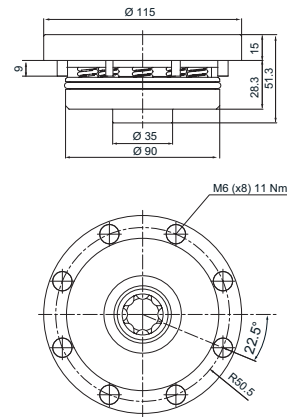
- Clamping force, 10 kN
- Holding force, 60 kN
- Air pressure open, 6 - 10 bars
- Oil pressure open, max 30 bars
- Repeatability, within 0.003 mm
- Material, hardened stainless steel

Applications

Milling, wire/die-sinking EDM and laser.

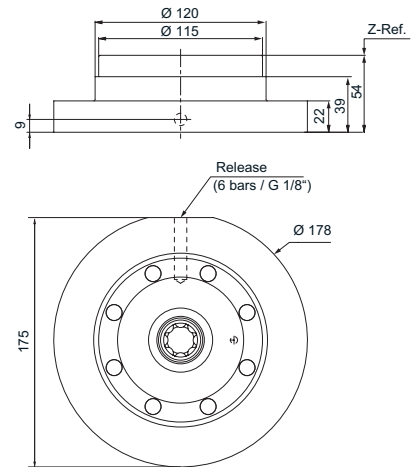
Built-in

Built into machine table or baseplate.



Built-up

Built on machine table

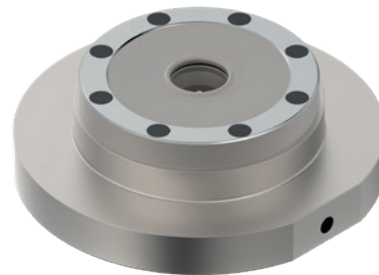
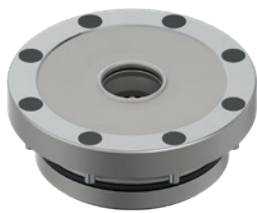


DelphinClassic built-in chuck C272000

For easy installation in machine tables and baseplates.

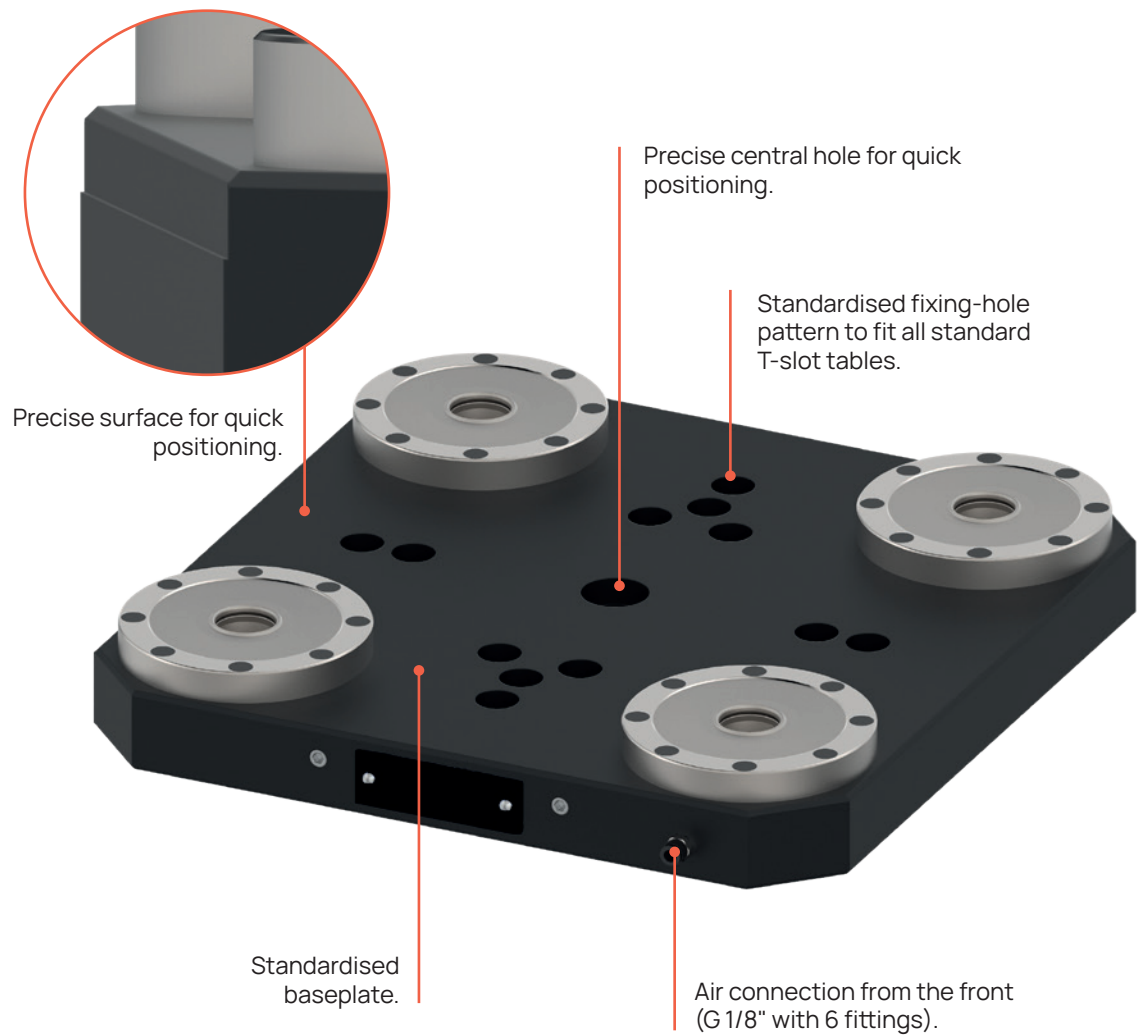
DelphinClassic built-up chuck C272310

For mounting directly on machine tables.
Mounting holes to be drilled when installing.



DelphinClassic baseplate

Our starter baseplate prepares you for the fastest possible pallet, device and workpiece changes. The Delphin baseplate offers maximum flexibility and process reliability throughout the entire production process. High clamping force with maximum accuracy is guaranteed.



KEY FACTS

- High clamping force, up to 40,000 N
- Pneumatic opening
- Mechanical self-locking for highest process reliability

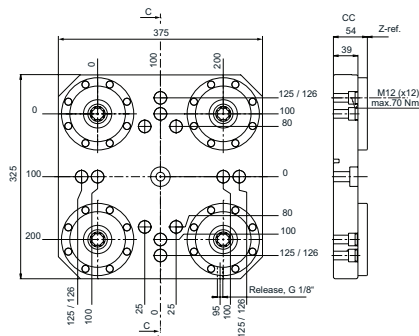
DelphinClassic baseplates – For manual applications

Technical data

- Clamping force, up to 40 kN
- Holding force, 240 kN
- Release pressure, 6 - 10 bars
- Repeatability, within 0.003 mm
- Material, hardened stainless steel and hard anodised aluminium

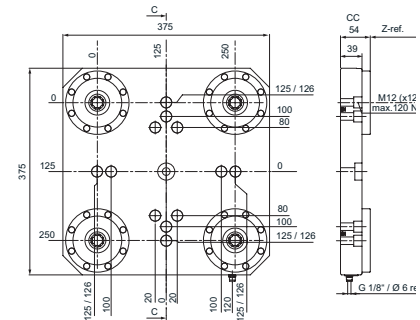
4-fold baseplate, cc 200 mm

Supplied without AirDisc.



4-fold baseplate, cc 250 mm

Supplied without AirDisc.

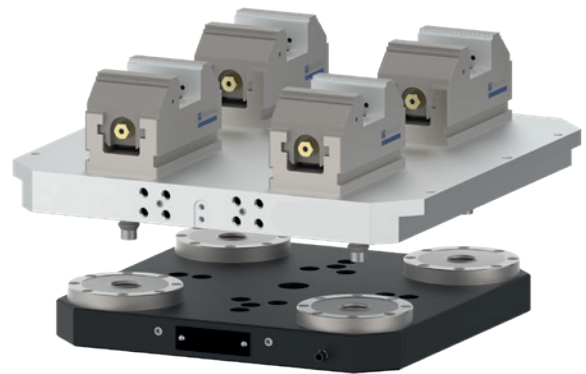


Applications

Milling and laser.



Example customer application



DelphinClassic 4-fold baseplates

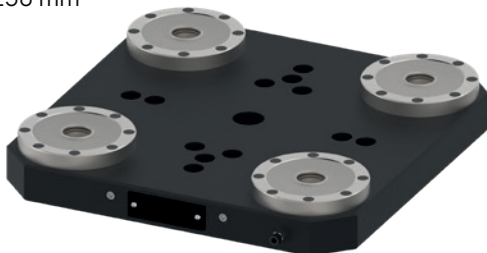
Has 1 fitting for side connection.

C272200

- cc 200 mm

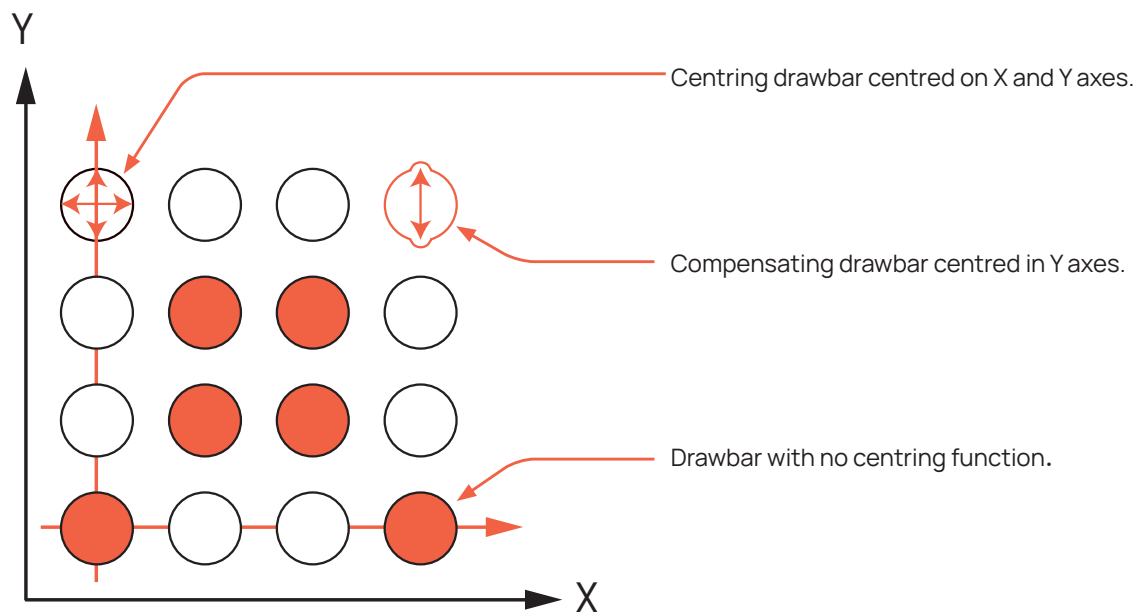
C272250

- cc 250 mm



Delphin drawbars

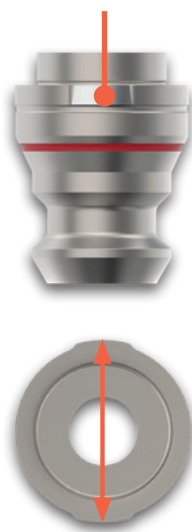
Drawbars are mounted directly into a workpiece, pallet or fixture. There are three different types of drawbars. One type defines the zero point and thus centres in 2 axes. Another drawbar type centres in one axis only. All other drawbars have no centring function. They are solely for clamping.



For centring in 2 axes
= zero point.



For centring in 1 axis
= angle definition.



No centring
= only clamping.



Delphin drawbars

Delphin 2 axes-centring drawbar C282000

Fixed in pallet.

- Material, stainless steel (hardened and ground)
- Dimensions (screwed in), Ø 28 x 40.5 mm

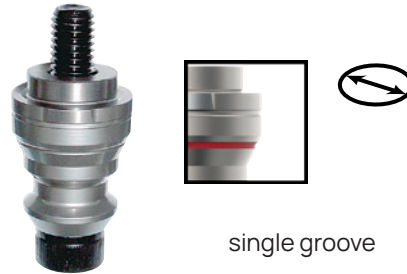


two grooves

Delphin 1 axis-centring drawbar C282100

Fixed in pallet.

- Material, stainless steel (hardened and ground)
- Dimensions (screwed in), Ø 28 x 40.5 mm



single groove

Delphin no-centring drawbar C282200

Fixed in pallet.

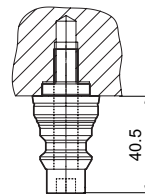
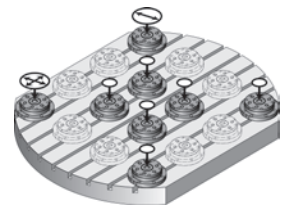
- Material, stainless steel (hardened and ground)
- Dimensions (screwed in), Ø 28 x 40.5 mm



no grooves

Delphin drawbar function

- ⊗ centring on 2 axes
- ↻ centring on 1 axis
- no centring



fixed in pallet

Drawbar sets

2-drawbar set S812000

Set comprises:

- 1 x C282000 (centring on 2 axes)
- 1 x C282100 (centring on 1 axis)



4-drawbar set S812100

Set comprises:

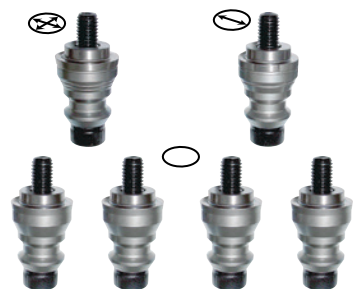
- 1 x C282000 (centring on 2 axes)
- 1 x C282100 (centring on 1 axis)
- 2 x C282200 (no centring)



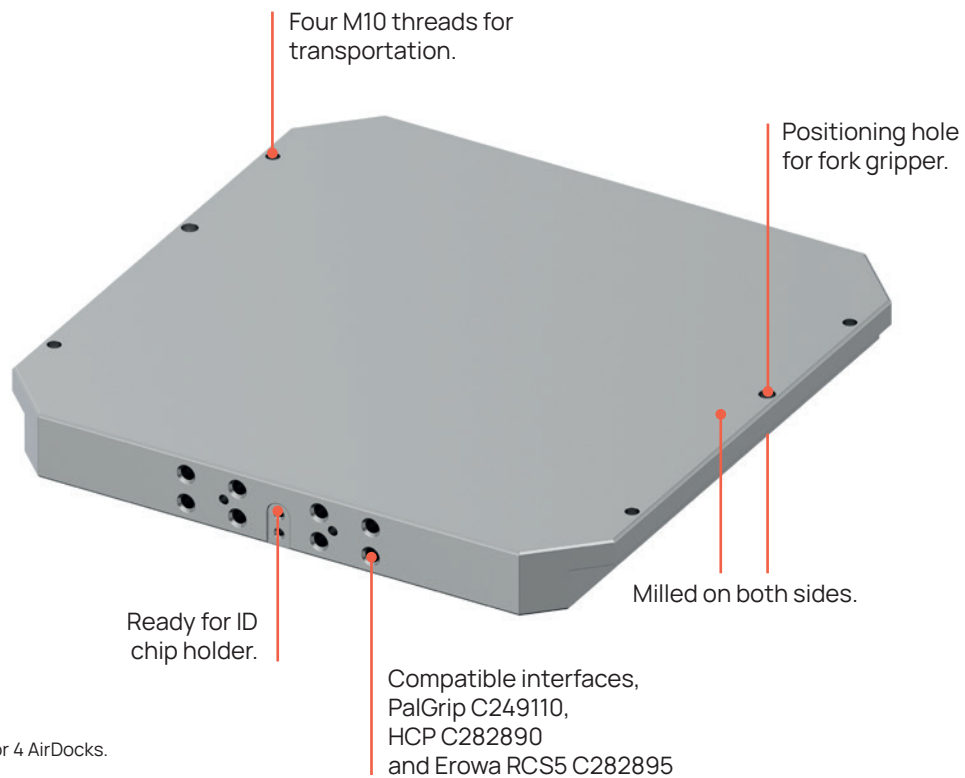
6-drawbar set S812200

Set comprises:

- 1 x C282000 (centring on 2 axes)
- 1 x C282100 (centring on 1 axis)
- 4 x C282200 (no centring)



Delphin pallets



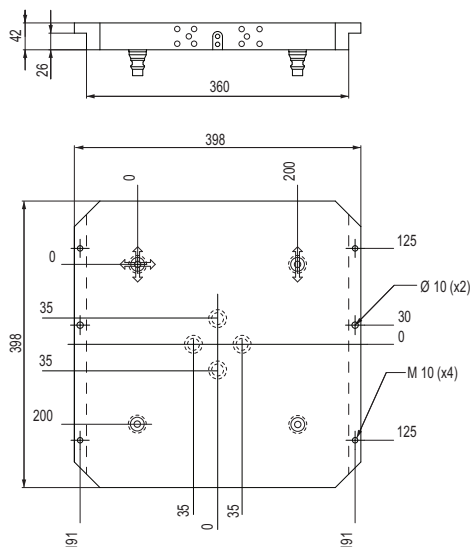
NOTE: The pallet is ready for 4 AirDocks.

Delphin 4-drawbar pallet C282820

- Automation ready
- Material, aluminium
- Parallelism, 0.04 mm
- 4 ready-assembled drawbars

Pallet set S282820

- C282820 supplied as a set of 5

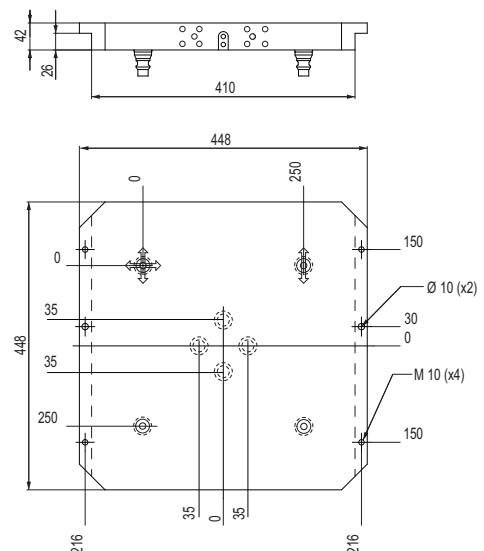


Delphin 4-drawbar pallet C282830

- Automation ready
- Material, aluminium
- Parallelism, 0.04 mm
- 4 ready-assembled drawbars

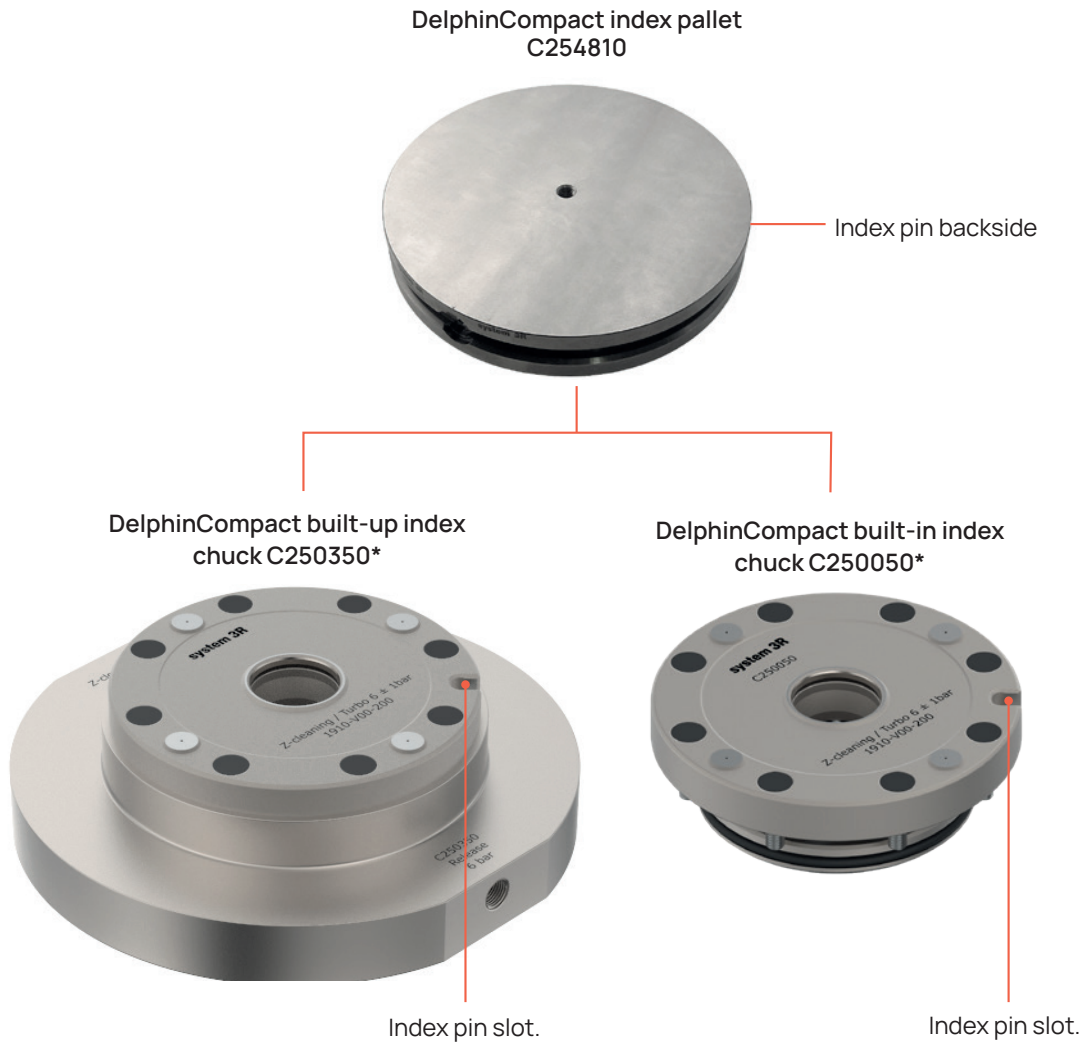
Pallet set S282830

- C282830 supplied as a set of 5



DelphinCompact index

Single chuck and pallet application



POSITIONING ACCURACY

- Centre repeatability, within 0.003 mm
- Angle repeatability, within 0.020 mm per 100 mm.

NOTE: For flexibility, an index chuck can be integrated into a baseplate so that it is possible to work with a single pallet.

* Delphin HT chucks are also available for use in high-temperature environments.

Delphin accessories

Chuck-side AirDock valve S254000

Needed to build chuck adapter baseplates.
Suitable for vacuum applications and pressures up to 8 bars.

- Set of 2



Pallet-side AirDock valve S254010

Needed to build chuck adapter pallets.
Suitable for vacuum applications and pressures up to 8 bars.

- Set of 2



OilDock valves chuck-side, S254060

Needed to build chuck adapter baseplates.
Thanks to the sealed design, cooling water cannot penetrate.

Suitable for hydraulic pressures up to 200 bars.

- Set of 2



OilDock valves pallet-side, S254070

Needed to build chuck adapter pallets.
Thanks to the sealed design, cooling water cannot penetrate.

Suitable for hydraulic pressures up to 200 bars.

- Set of 2



Spare parts

For Delphin chucks. Includes O-rings, compression springs or disc springs, balls, screws, screw cover and assembly tool.

Table chuck type item no.

DelphinClassic	S272000
DelphinCompact	S250000
HCP	S840040
HSP	S840000
HHP	S840010
HHPA	S840060
PSP	S840030
PHP	S840020
PHPA	S840050



Delphin accessories

DelphinCompact pneumatic control unit C254950

Control unit especially for DelphinCompact.

- Includes 10 m tube (Ø 6 mm) and 2 fittings



NOTE: Connection fittings (S254050) are needed.

Baseplate connection fittings S254050

To be used when connecting air laterally to the Delphin baseplate.



Pneumatic control unit, C254970

This pneumatic control unit is used for the baseplate.

- Sliding hand valve
- Connecting fitting G 1/8"
- Coupling

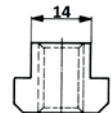


Baseplate fixing accessory sets

For fixing baseplate on machine table.

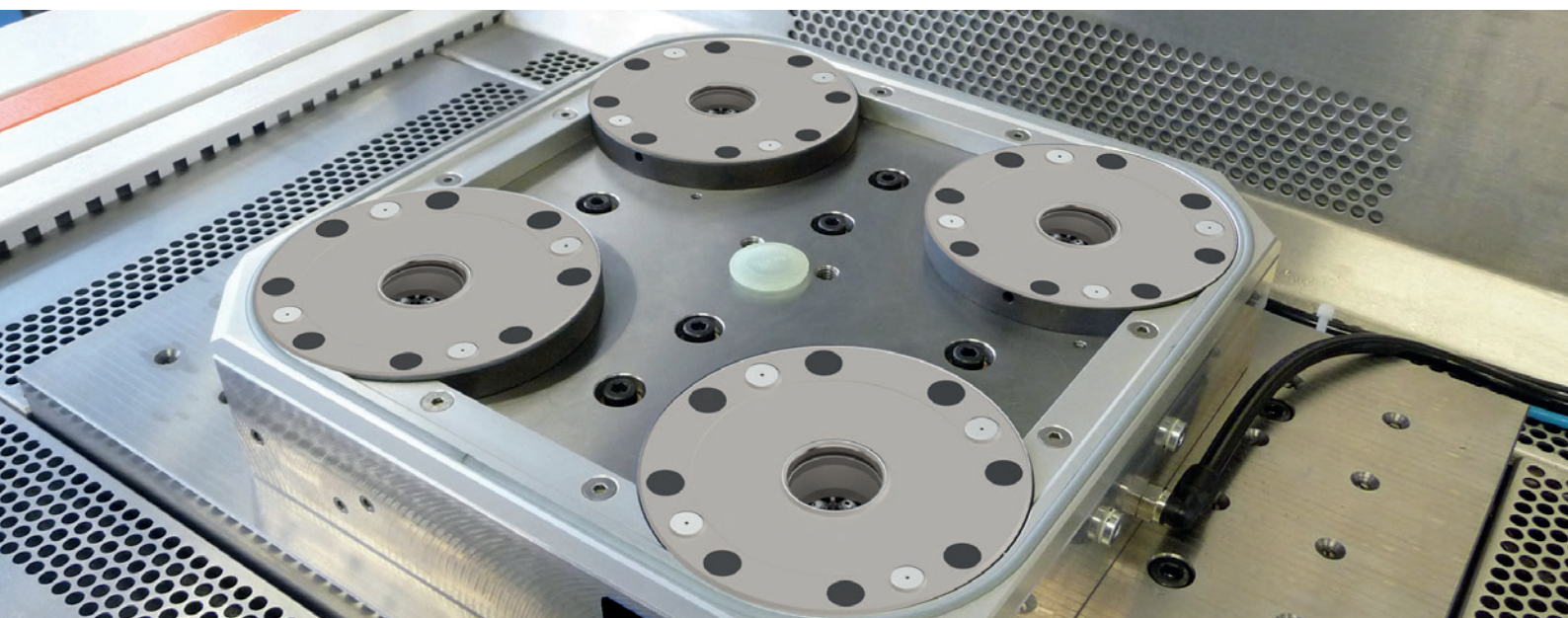
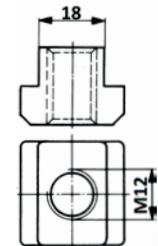
C289130

- M12x45 cylinder head screws (x6)
- M12x55 cylinder head screws (x6)
- M12x14 T-slot nuts (x6)

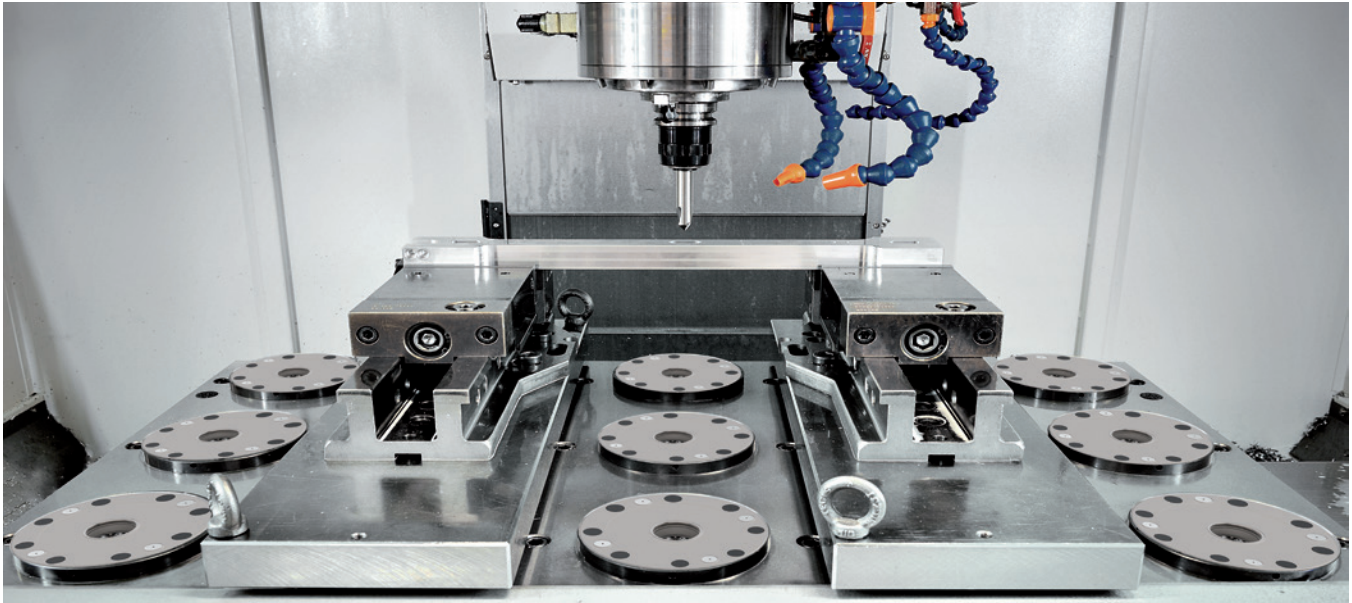


C289140

- M12x45 cylinder head screws (x6)
- M12x55 cylinder head screws (x6)
- M12x18 T-slot nuts (x6)



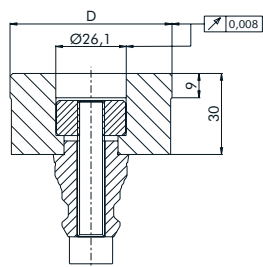
Delphin accessories



Reference mandrel C288170

Alignment aid for chuck installation.

- Material: steel stainless, hardened and ground
 - For all chucks
- Diameter (D), 110 mm



Delphin protective pallet S254100

Chip and air pressure (turbo locking) protection for DelphinCompact and DelphinClassic chucks.

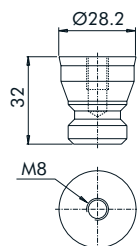
- Fits to chuck with sealing ring
- Set comprises:
Drawbar C282000 (x1)
Protective pallet C266040 (x1).



Protective Drawbar DelphinClassic, C286060

Chip protection for chuck, seals centre bore, Z-support of chuck remains usable.

- Material, plastic
- Dimensions, Ø 28 x 32 mm
- M8 for dismounting



Frame sealing cords

4 metre sealing cord S817200

4 metre FKM sealing cord S817220

- Sealing cords for most Delphin sealing frames.
- Suitable for, C252210 and C252260
- Length, 4 m

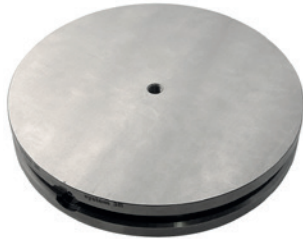


Delphin index pallet and accessories

DelphinCompact index pallet C254810

To be used with single index chuck C250050 or C250350

- Material, hardened steel
- Drawbar C282000 included
- Weight 4.3 kg



DelphinCompact checking ruler C254800

Reference pallet for index chuck. To be used for aligning built-in and built-up index chucks at installation.

- Suitable for C250050, C250070, C250350 and C370560
- Drawbar included
- Stainless steel (hardened and ground)
- Weight 2.9 kg



Pre-centring pin / Pre-centring bush

Pre-centring for medium to large workpieces. Should always be used wherever possible.

- Stainless steel

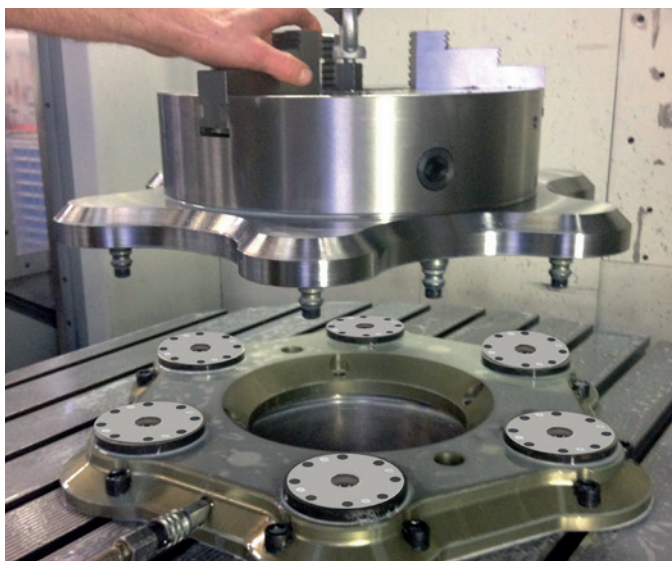
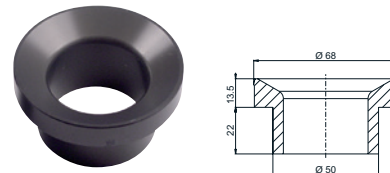
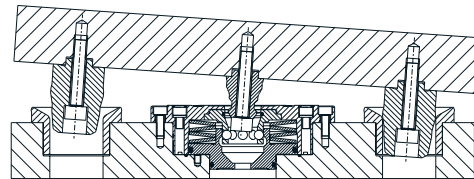
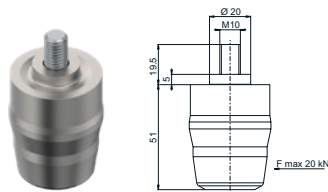
C286250

Pre-centring bush for DelphinCompact and DelphinClassic.

- Aluminium

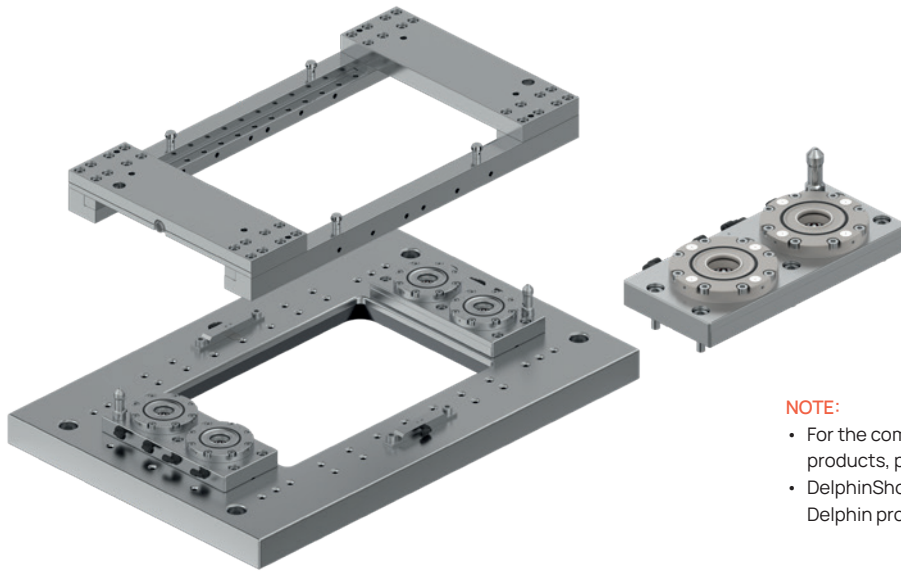
C286160

Pre-centring pin for for pallets/devices.



Example customer application

DelphinShort and frames for wire EDM



NOTE:

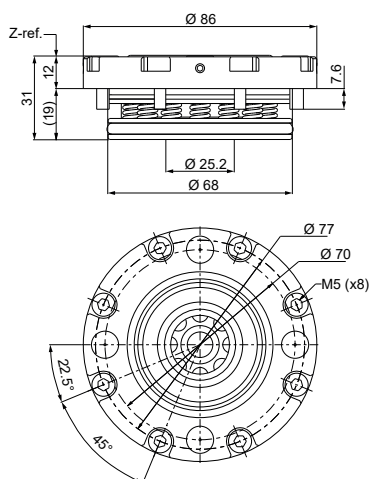
- For the complete range of wire EDM products, please ask for separate catalogue.
- DelphinShort is not compatible with other Delphin products.

ADVANTAGES

DelphinShort is often the answer when tooling size is an issue. Smaller diameter and lower built-in height are just two of the advantages of DelphinShort tooling. Can be used in many applications besides wire EDM.

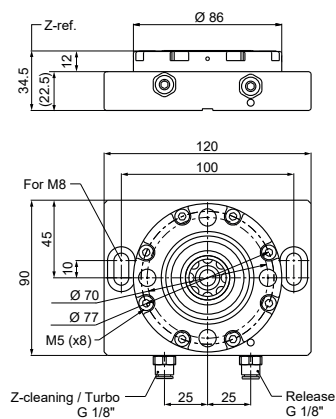
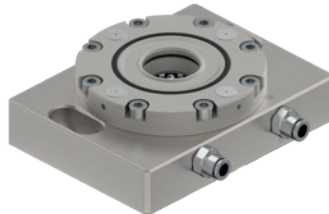
DelphinShort built-in chuck C225000

For easy installation in machine tables and baseplates.



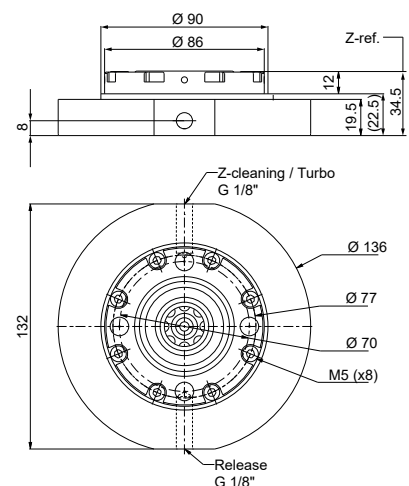
DelphinShort built-up chuck (with wire EDM flange) C225300

For easy installation on wire EDM machine table frames.

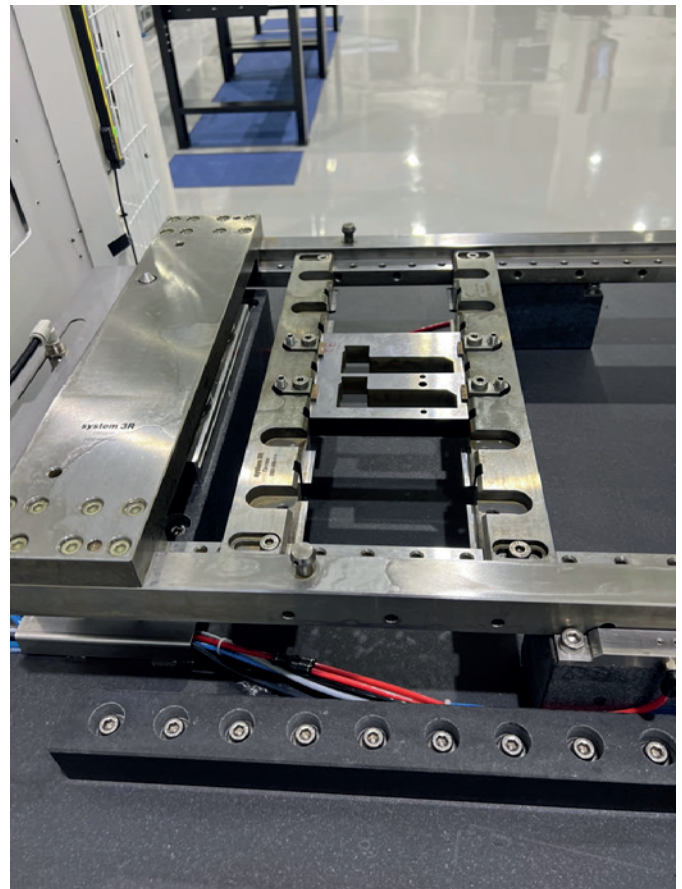
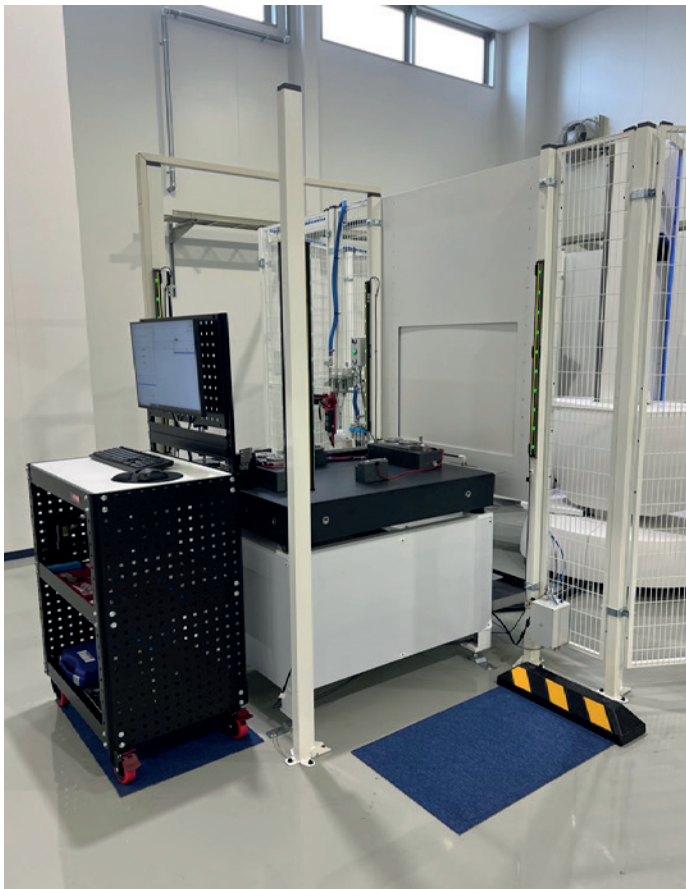
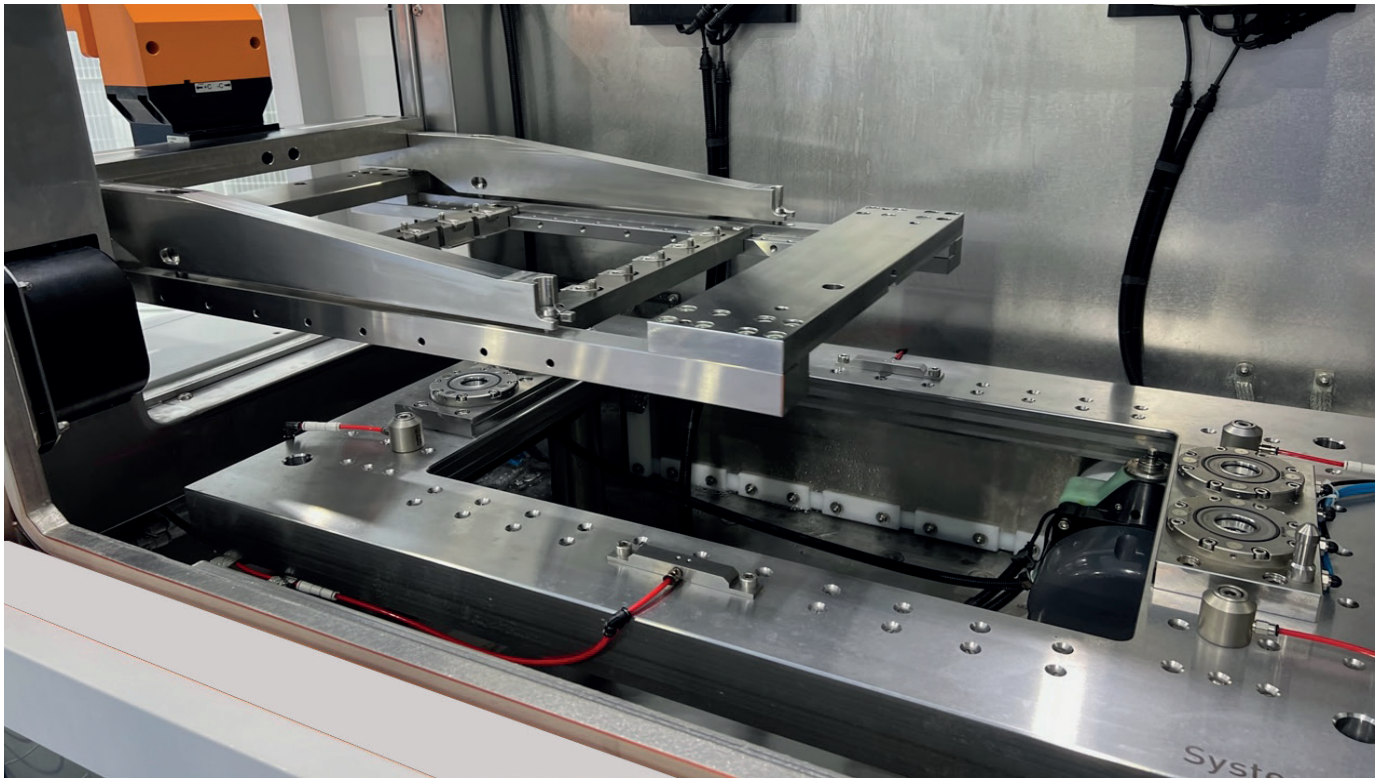


DelphinShort built-up chuck C225310

For mounting directly on machine tables. Mounting holes to be drilled when installing.

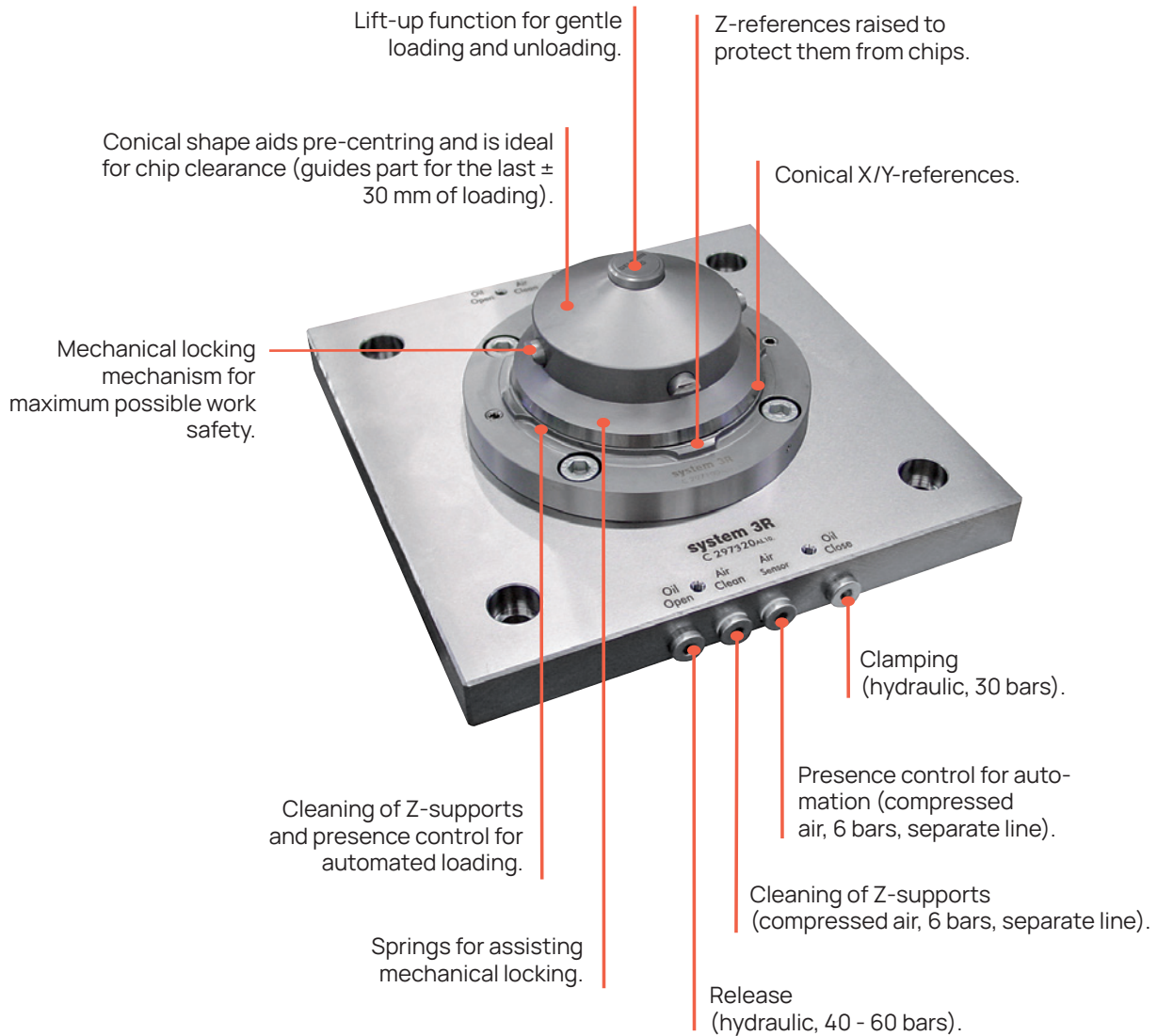


DelphinShort wire EDM frame applications



Stationary automation cell with rack magazine for wire EDM frames.
Coordinate measuring machine (CMM) outside the cell also used as loading station for larger wire EDM frames.

DelphinBIG chuck



KEY FACTS

- Can be used for large workpieces
- High clamping force (up to 50 kN with turbo locking)
- Hydraulic release (with lift-up function of 2,500 kg at 60 bars)
- Simple loading (thanks to integrated pre-centring)
- Workpiece thermal expansion accommodated (up to ± 0.4 mm)

DelphinBIG –For automated and manual applications

Technical data

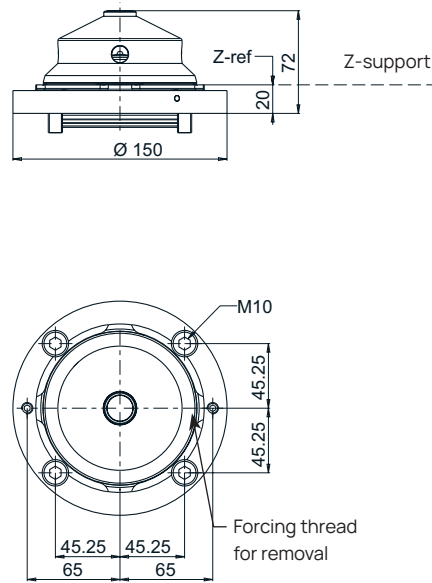
- Clamping force at 30 bars turbo pressure, up to 50 kN
- Holding force, 100 kN
- Oil pressure release, max 30 - 60 bars
- Lift-up function, 2,500 kg, 2 mm at 60 bars release pressure
- Repeatability, within 0.005 mm
- Material, hardened steel

Applications

Milling

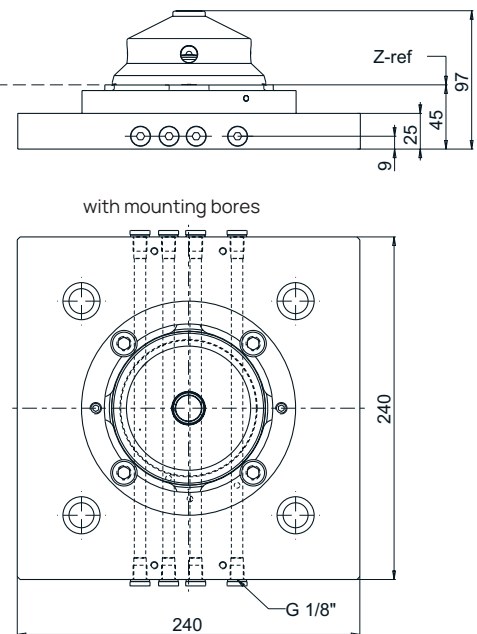
Built-in chuck

Built into machine table or baseplate.



Built-up chuck

Built on machine table.



DelphinBIG built-in chuck C297000

For easy installation in machine tables.

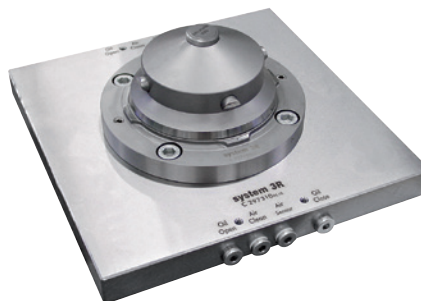


DelphinBIG built-up chuck C297310

Mounting holes can be made by customer.

At least 4 chucks per application are recommended.

- Chuck C297000



DelphinBIG spare parts set S850000

For Delphin BIG chucks. Includes O-rings, compression springs or disc springs, balls, screws, screw cover and assembly tool.

DelphinBIG 2-axes centring ring C298010

Includes fixing.



DelphinBIG 1-axis centring ring C298110

Includes fixing



DelphinBIG no centring ring C298210

Includes fixing





OilDock

AirDock

system 3R

Automation



Utilise every hour of the day and night!

An automatic production cell can generate revenue round the clock, seven days a week. Why be satisfied with 40 productive machine-hours a week when the same machine can achieve over 100 additional hours a week? Use every hour of the day and night for production!

Boost your productivity and sharpen your competitiveness with our three winners: WorkPal 1, WorkPartner 1+ and Fanuc.

Last, but not least, our winners ensure faster payback on your investments.

For powder press automation solutions, please ask for more information.



WorkPal 1

Modest demands, major benefits.



Automation

With six-axis Fanuc industrial robot.



WorkPartner 1+

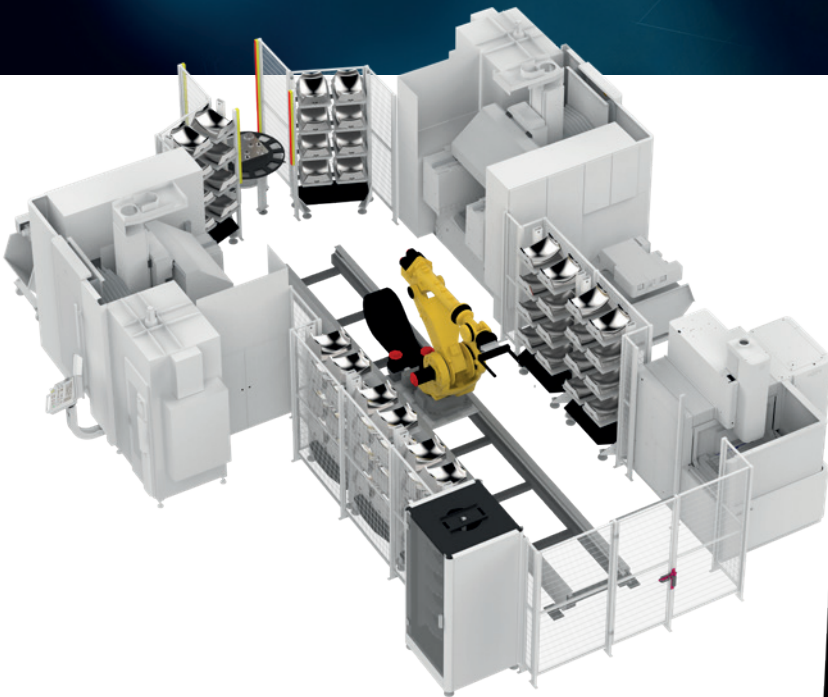
Can serve two machines.

WorkShopManager WSM

User-friendly cell-management software

Master workshop complexity and manage all control processes with our software. For manually controlled and automated processes.

- Simplify job preparation
- Execute jobs easily in manual or automated machines
- Monitor processes, changes priorities and collect utilisation statistics
- Use ID chip management to ensure highest process reliability



Sustainability declaration

IMPROVED PRODUCTIVITY

Improve your productivity by: using existing production equipment optimally; and, increasing resource use, e.g. run machines during unmanned hours (nights, weekends, etc.). Instead of outsourcing production and incurring shipping costs, produce in-house 24/7.

By seamlessly integrating advanced technology into your operations, you can execute repetitive tasks with precision and speed, thereby freeing up human resources for higher-value activities. Machines equipped with our automation systems work tirelessly, reducing errors, optimising production schedules and achieving consistent output.

ADVANCED EASE OF OPERATION

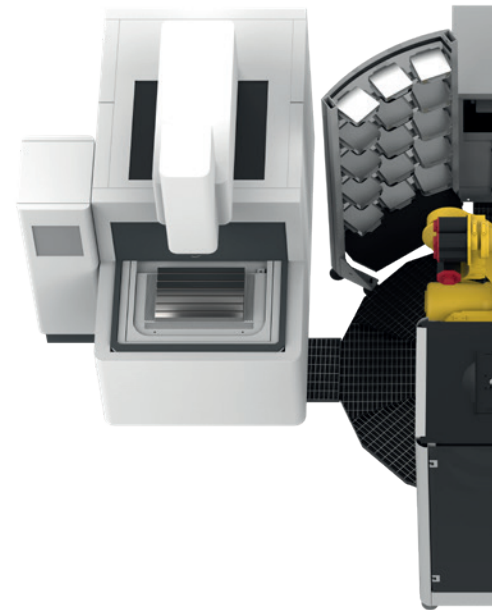
Machine automation has improved operation simplicity and revolutionised efficiency and productivity on an industrial scale. With intuitive interfaces and streamlined processes, workers can, with minimal training, quickly adapt and control complex tasks. Automated systems eliminate human error and promote precise execution. Consistent output and reduced downtime are two of the results.

SAFEGUARD OPERATOR HEALTH BY USING ROBOTS IN SELF-CONTAINED ENVIRONMENTS

Machine automation is a highly promising avenue for improving operator health. By taking over physically demanding tasks, our machines reduce the risk of musculoskeletal injuries and fatigue-related issues.

Additionally, advanced sensors and AI algorithms can detect hazardous conditions, alerting operators to potential dangers and enabling prompt intervention. This synergy between automation and human operators enhances workplace safety and promotes a healthier work environment.

In-house 24/7 production



TOOLING + AUTOMATION + SOFTWARE

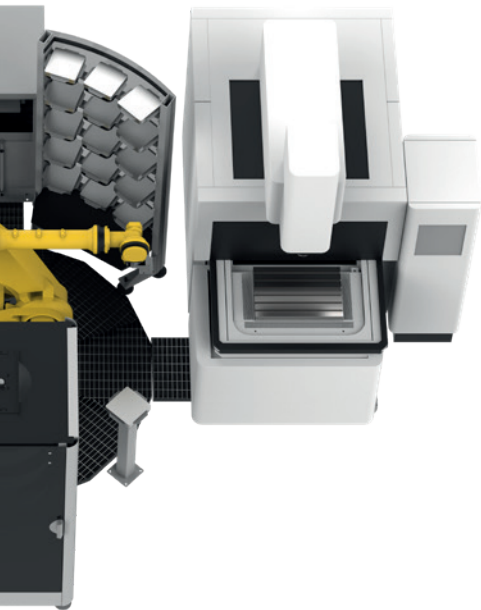
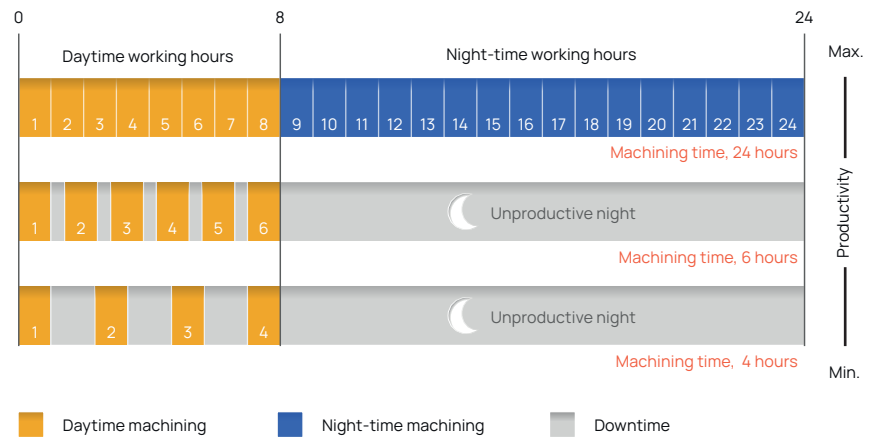
One manned shift – 8 hours
Two more unmanned shifts – 16 hours

TOOLING

One manned shift – 8 hours

CONVENTIONAL SETUP

One manned shift – 8 hours



CARBON-NEUTRAL FROM THE VERY START OF MANUFACTURING ALL THE WAY TO RECYCLING AFTER USE

Our automation solutions are manufactured at our CO₂ neutral facility in Vällingby, Sweden. With the ability to self-diagnose and adapt, these solutions extend working lives, reduce maintenance costs and optimise production processes. They can also make optimum use of cheaper electricity supplied outside daily peak hours.

At the end of their service lives, the items of equipment they use can be recycled as metals and standard electronics.



Index

C220000	14	S252101	23
C220000	18	S252151	23
C250000	14	S252201	16
C250010	14	S252202	16
C250050	14	S252203	16
C250310	14	S252204	17
C250350	14	S252251	16
C252210	17	S252252	16
C252260	17	S252253	16
C253XXX	17	S252254	17
C254090	17	S254000	28
C254950	29	S254010	28
C254970	29	S254050	29
C272000	21	S254060	28
C272200	23	S254070	28
C272250	23	S254100	30
C272310	21	S272000	31
C282000	25	S282820	26
C282100	25	S282830	26
C282200	25	S812000	25
C282820	26	S812100	25
C282830	26	S812200	25
C286060	30	S814000	31
C286080	31	S817200	31
C286160	31	S817220	31
C286250	31	S840000	31
C288170	30	S840010	31
C289130	30	S840020	31
C289140	30	S840030	31
C297000	33	S840040	31
C297310	33	S840050	31
C298010	33	S840060	31
C298110	33	S850000	33
C298210	33		
S250000	31		

Work smarter,
not harder

Use our Customer Services to optimise your equipment uptime

System 3R's Customer Services department is uniquely positioned to help you maximize the availability, value, precision and productivity of your System 3R equipment. Our cost-effective, customer-centric and expert services put your success at the centre, ramp up your productivity and ensure predictable, uninterrupted uptime.

System 3R's service engineers are your expert partners for a wide range of success-triggering services.

For further details, contact your local System 3R dealer.

www.system3r.com

Combi, Delphin, Dynafix, Locx, LX, Macro, Matrix, One Minute Set-Up, One System Partner, R2R, System 3R, VDP, WorkMaster, WorkPal, WorkPartner, WorkShopManager, 3HP, 3R, 3Ready, To-Run and 3Refix are registered trademarks of System 3R.